



OVER 60?

Secure this property
for up to **59% less!**

Price

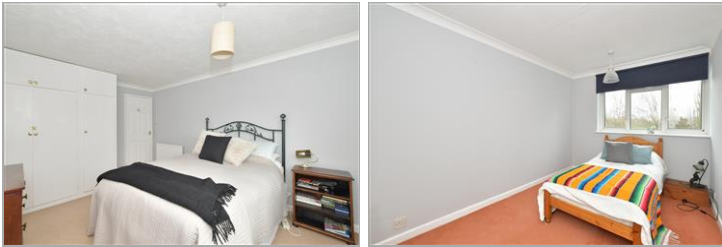
£235,000

Leasehold

2x  1x  1x 

**Park View Court, Jubilee
Avenue, Rustington,
West Sussex, BN16**

cubitt&west
Helping you move forwards



Main features

- Good size apartment with garage en bloc with electricity
- Walking distance to local amenities
- Short distance to mainline train station & supermarkets
- Great first time buy or investment opportunity
- Allocated Parking Space "C"
- No ongoing chain

Accommodation

FIRST FLOOR

Entrance Hallway

Lounge/Diner: 20'2 x 12'4 (6.15m x 3.76m)

Kitchen: 9'1 x 7'1 (2.77m x 2.16m)

Bedroom 1: 13'5 x 10'6 (4.09m x 3.20m)

Bedroom 2: 13'5 x 7'9 (4.09m x 2.36m)

Bathroom

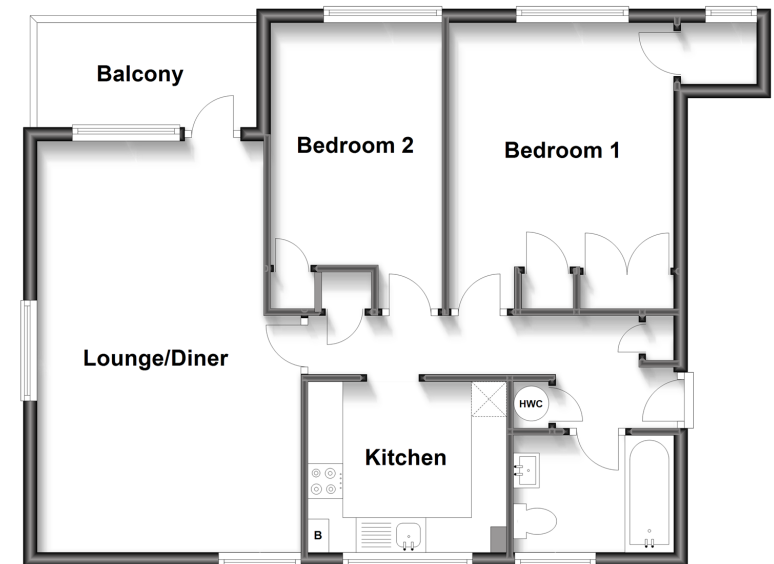
OUTSIDE

Garage en Bloc with electric

Allocated Parking Space "C"

First Floor

Approx. 64.6 sq. metres (695.6 sq. feet)



Call Rustington - 01903 775576 ■ cubittandwest.co.uk

- Legal advice should be taken to verify fixtures/fittings, planning, alterations and/or lease details
- Appliances & services are untested, dimensions are approximate and floor plans are not to scale
- Through a Homewise Home For Life Plan people aged 60+ can secure this property for up to 59% less, by purchasing a Lifetime Lease.



23707643/20230606/TD/OS