



Price
£425,000

Freehold

4x  2x  2x 

**Fastnet Way, Beaumont
Park, West Sussex, BN17**

OVER 60?

Secure this property
for up to **59% less!**

cubitt&west
Helping you move forwards



Main features

- Extended family home offer light and spacious accommodation
- Integral garage & ample parking
- Sunny aspect rear garden
- Walking distance to Rustington Village
- Close to good schools and local amenities

Accommodation

Dining Room: 14'8 x 11'3 (4.47m x 3.43m)

Lounge: 18'3 x 11'4 (5.57m x 3.46m)

Kitchen: 12'0 x 7'4 (3.66m x 2.24m)

Utility Room: 7'3 x 4'0 (2.21m x 1.22m)

Shower Room/Toilet

FIRST FLOOR

Landing

Bedroom 1: 11'8 x 9'9 (3.56m x 2.97m)

Bedroom 2: 9'8 x 7'9 (2.95m x 2.36m)

Bedroom 3: 9'3 x 7'8 (2.82m x 2.34m)

Bedroom 4: 9'2 x 7'0 (2.80m x 2.14m)

Family Bathroom

OUTSIDE

Front Garden

Rear Garden

Integral Garage

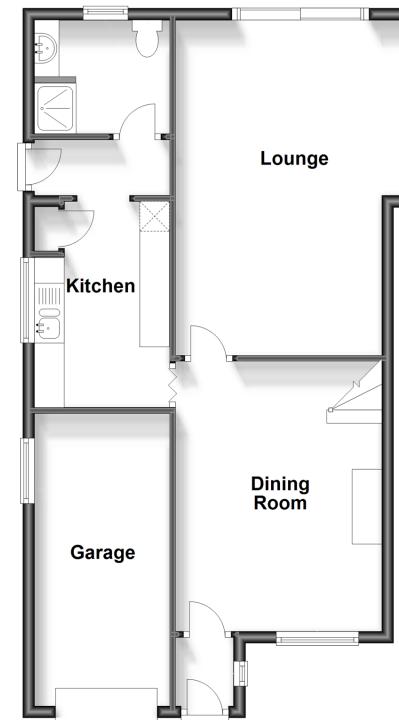
Driveway

Call Rustington - 01903 775576 ■ cubittandwest.co.uk

- Legal advice should be taken to verify fixtures/fittings, planning, alterations and/or lease details
- Appliances & services are untested, dimensions are approximate and floor plans are not to scale
- Through a Homewise Home For Life Plan people aged 60+ can secure this property for up to 59% less, by purchasing a Lifetime Lease.

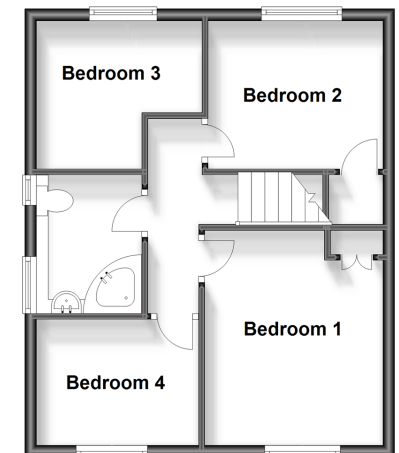
Ground Floor

Approx. 65.2 sq. metres (702.3 sq. feet)



First Floor

Approx. 41.4 sq. metres (445.8 sq. feet)



23707649/20230603/FM/JS