



Price

£190,000

Leasehold

2x  1x  1x 

**Lyminster Gate,
Lyminster Road,
Littlehampton, West
Sussex, BN17**

OVER 60?

Secure this property
for up to **59% less!**



Video Tour available

cubitt & west
Helping you move forwards



Main features

- Good size split level maisonette with own private entrance
- Close to local amenities and supermarkets
- Close to good catchment areas for schools for all ages
- Short distance to Town Centre
- Good road access to A27 for commuters

Accommodation

FIRST FLOOR

Entrance Hallway

Cloakroom

Kitchen: 9'0 x 6'5 (2.75m x 1.96m)

Living Room: 17'3 x 13'5 (5.26m x 4.09m)

SECOND FLOOR

Landing

Bedroom 1: 14'1 x 10'2 (4.30m x 3.10m)

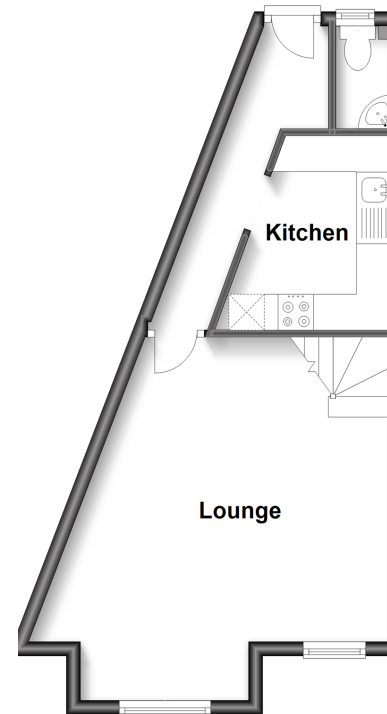
Bedroom 2: 10'4 x 7'7 (3.15m x 2.31m)

Bathroom

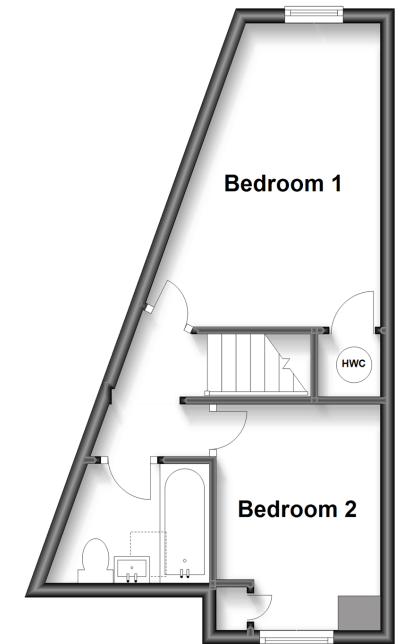
OUTSIDE

Communal Private Parking

First Floor
Approx. 31.8 sq. metres (342.0 sq. feet)



Second Floor
Approx. 27.6 sq. metres (296.8 sq. feet)



Call Rustington - 01903 775576 ■ cubittandwest.co.uk

- Legal advice should be taken to verify fixtures/fittings, planning, alterations and/or lease details
- Appliances & services are untested, dimensions are approximate and floor plans are not to scale
- Through a Homewise Home For Life Plan people aged 60+ can secure this property for up to 59% less, by purchasing a Lifetime Lease.



23707713/20230502/JS/OS