



Price
£270,000

Freehold

2x  2x  1x 

**Moore Grove, Wick,
Littlehampton, West
Sussex, BN17**

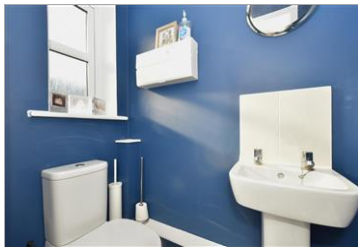
OVER 60?

Secure this property
for up to **59% less!**



Video Tour available

cubitt & west
Helping you move forwards



Main features

- A bright and airy recently built house
- French doors lead out onto a patio with lawn beyond
- Allocated parking to the front
- Parade of shops a short distance
- Excellent transport links

Accommodation

GROUND FLOOR

Entrance Hall

Cloakroom

Lounge: 15'2 x 9'11 at widest point (4.63m x 3.02m)

Kitchen: 12'10 x 9'0 (3.91m x 2.75m)

FIRST FLOOR

Landing

Bedroom 1: 12'10 x 9'1 at widest point (3.91m x 2.77m)

Bedroom 2: 9'11 x 8'4 (3.02m x 2.54m)

En-Suite Shower Room

Family Bathroom

OUTSIDE

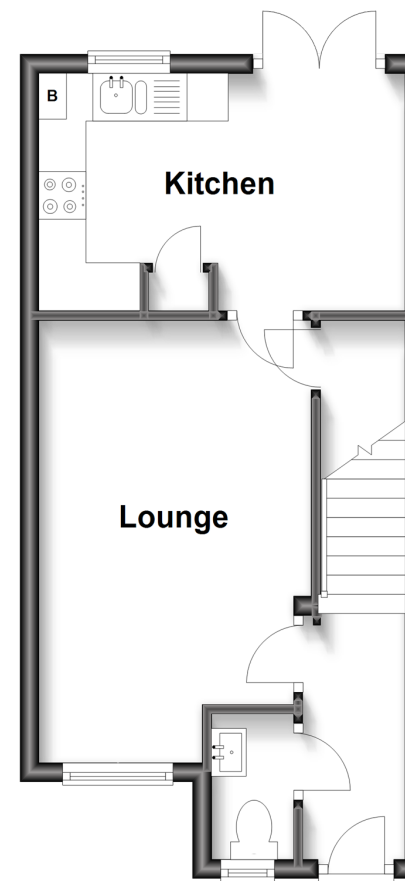
Front Garden

Allocated Parking

Rear Garden

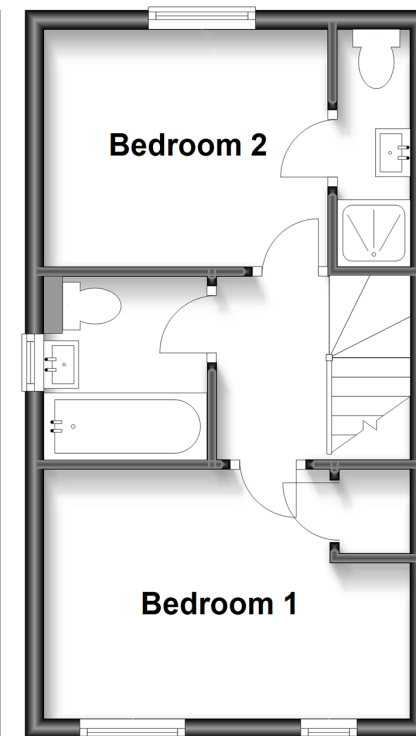
Ground Floor

Approx. 30.1 sq. metres (324.0 sq. feet)



First Floor

Approx. 28.0 sq. metres (301.6 sq. feet)



Call Arundel - 01903 884420 ■ cubittandwest.co.uk

- Legal advice should be taken to verify fixtures/fittings, planning, alterations and/or lease details
- Appliances & services are untested, dimensions are approximate and floor plans are not to scale
- Through a Homewise Home For Life Plan people aged 60+ can secure this property for up to 59% less, by purchasing a Lifetime Lease.



23707746/20230605/GS1/AK