



Price

£400,000

Freehold

3x  1x  2x 

**Seaton Close,
Littlehampton, West
Sussex, BN17**

OVER 60?

Secure this property
for up to **59% less!**

cubitt&west
Helping you move forwards



Main features

- Good size family home offering spacious accommodation
- Situated in quiet, secluded Close
- Sunny aspect rear garden plus additional courtyard
- Walking distance to schools for all ages
- Good transport links for A27 & A24

Accommodation

GROUND FLOOR

Entrance Hallway
Cloakroom
Lounge: 16'1 x 11'7 (4.91m x 3.53m)
Dining Room: 16'0 x 10'11 (4.88m x 3.33m)
Kitchen: 9'9 x 9'9 (2.97m x 2.97m)
Utility Room: 9'5 x 6'4 (2.87m x 1.93m)
Conservatory: 11'3 x 6'9 (3.43m x 2.06m)
Study: 11'4 x 6'2 (3.46m x 1.88m)

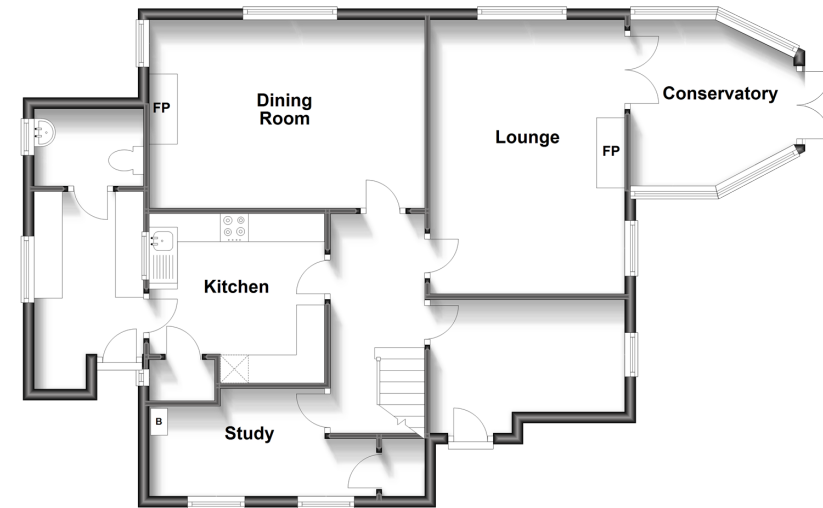
FIRST FLOOR

Landing
Bedroom 1: 13'10 x 13'3 (4.22m x 4.04m)
Bedroom 2: 10'2 x 8'4 (3.10m x 2.54m)
Bedroom 3: 11'9 x 9'9 (3.58m x 2.97m)
Bathroom

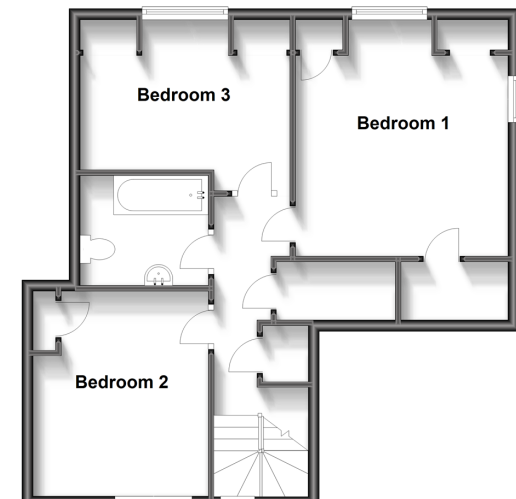
OUTSIDE

Front Garden
Rear Garden
Courtyard
Off Road Parking

Ground Floor
Approx. 84.3 sq. metres (907.6 sq. feet)



First Floor
Approx. 56.5 sq. metres (607.9 sq. feet)



Call Rustington - 01903 775576 ■ cubittandwest.co.uk

- Legal advice should be taken to verify fixtures/fittings, planning, alterations and/or lease details
- Appliances & services are untested, dimensions are approximate and floor plans are not to scale
- Through a Homewise Home For Life Plan people aged 60+ can secure this property for up to 59% less, by purchasing a Lifetime Lease.



23707797/20230725/OS/OS