



Price

£114,000

Leasehold

1x  1x  1x 

**Chermont Court, The Street, East Preston,
West Sussex, BN16**

cubitt&west
Helping you move forwards



Main features

- Second floor retirement flat in sought after seaside village
- Lift served and low outgoings to include water rates
- Allocated parking space plus visitor parking
- Easy access to 700 bus route
- No ongoing chain

Accommodation

SECOND FLOOR

Entrance Hallway

Lounge: 13'2 x 12'3 (4.02m x 3.74m)

Kitchen: 7'5 x 6'8 (2.26m x 2.03m)

Bedroom: 13'2 x 12'10 (4.02m x 3.91m)

Bathroom

OUTSIDE

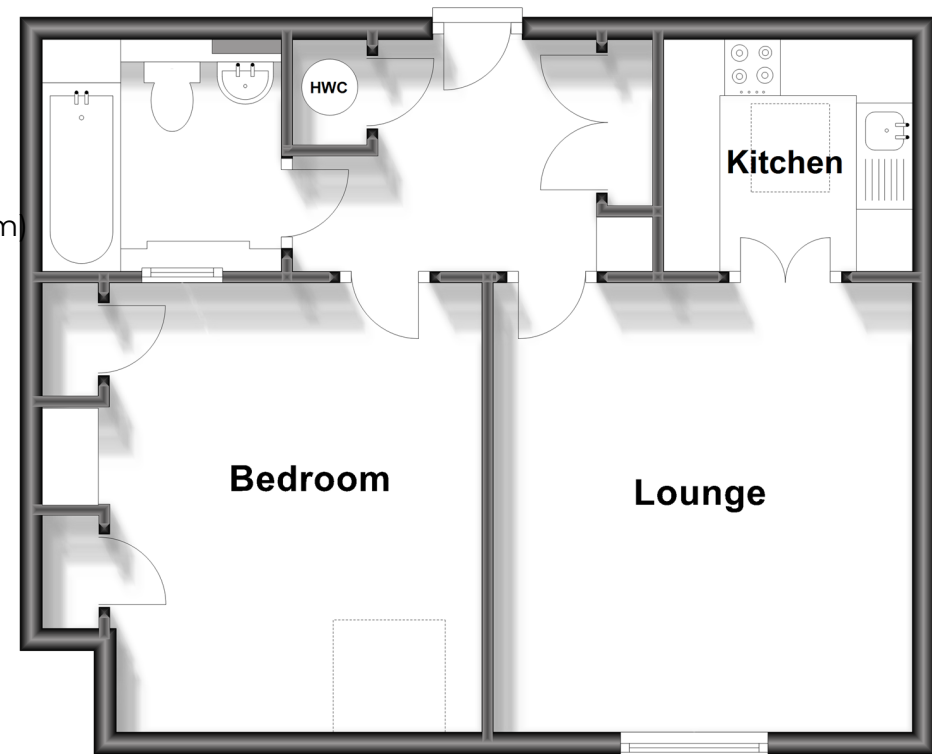
Communal Gardens

Allocated Parking Space

3 Visitor Parking Spaces

Second Floor

Approx. 47.3 sq. metres (509.3 sq. feet)



Call Rustington - 01903 775576 ■ cubittandwest.co.uk

- Legal advice should be taken to verify fixtures/fittings, planning, alterations and/or lease details
- Appliances & services are untested, dimensions are approximate and floor plans are not to scale



23707856/20230810/KP/OS