



Guide Price
£850,000

Freehold

4x  4x  3x 

**Golden Avenue, East
Preston, West Sussex,
BN16**

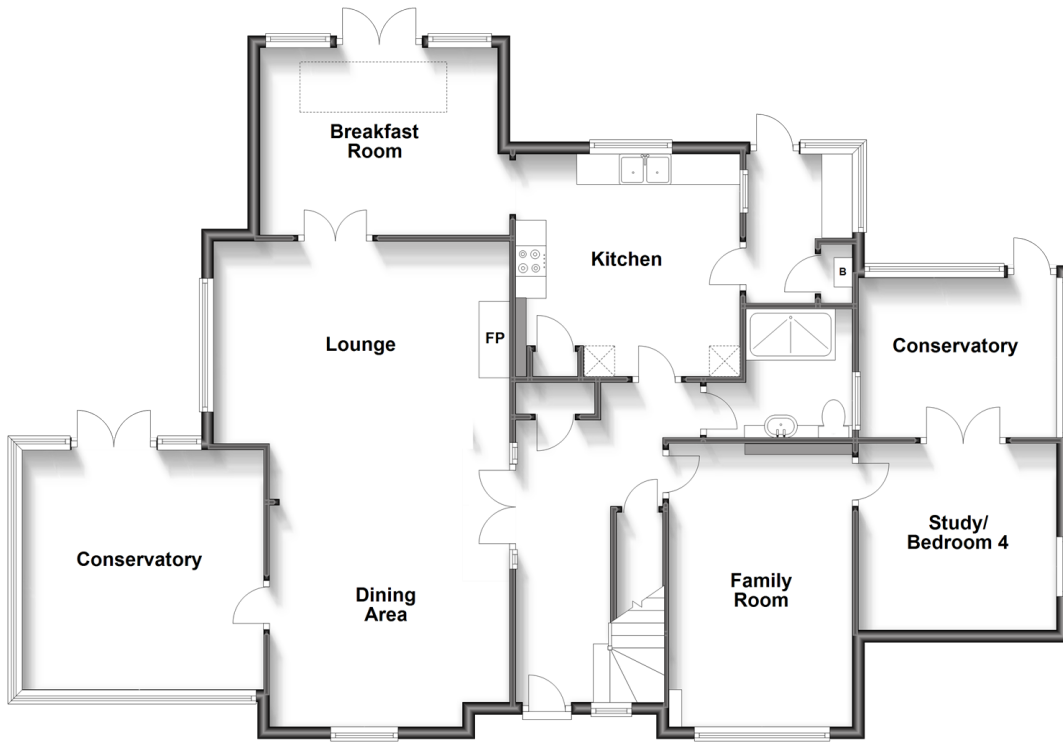
OVER 60?

Secure this property
for up to **59% less!**

cubitt&west
Helping you move forwards

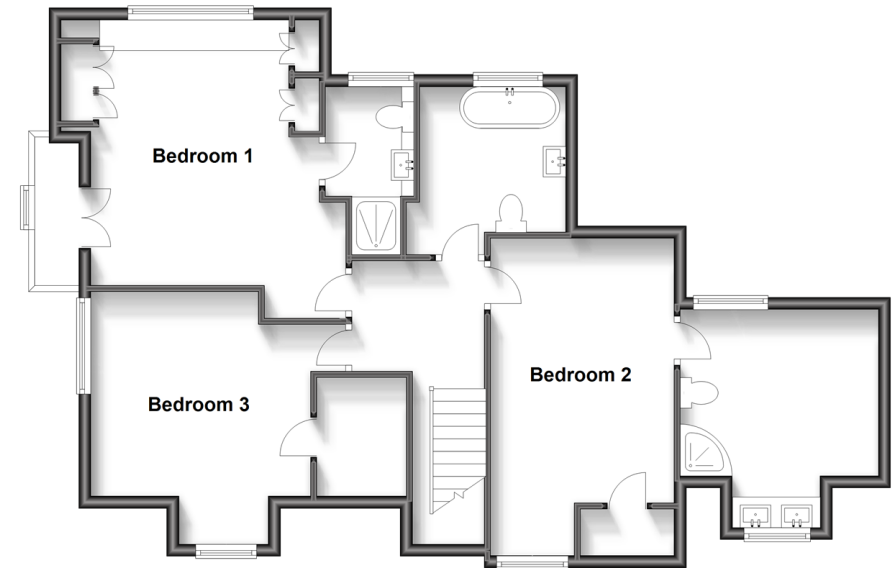
Ground Floor

Approx. 133.7 sq. metres (1438.7 sq. feet)



First Floor

Approx. 80.0 sq. metres (861.6 sq. feet)



Accommodation

GROUND FLOOR

Entrance Hallway
Shower Room
Lounge/Dining Area: 25'0 x 16'1 (7.63m x 4.91m)
Conservatory 1: 13'1 x 13'1 (3.99m x 3.99m)
Kitchen: 11'11 x 11'2 (3.63m x 3.41m)
Breakfast Room: 13'5 x 9'9 (4.09m x 2.97m)
Utility Room: 7'10 x 5'7 (2.39m x 1.70m)
Family Room: 15'1 x 9'11 (4.60m x 3.02m)
Study/Bedroom 4: 10'8 x 10'2 (3.25m x 3.10m)
Conservatory 2: 10'4 x 8'7 (3.15m x 2.62m)

FIRST FLOOR

Landing
Bedroom 1: 16'11 maximum x 13'8 maximum (5.16m x 4.17m)
En-suite Shower Room
Bedroom 2: 16'10 x 9'11 (5.13m x 3.02m)
En-suite & Dressing Area
Bedroom 3: 13'9 maximum x 13'5 (4.19m x 4.09m)
Family Bathroom

OUTSIDE

Front Garden
Side Garden
Rear Garden
Driveway
Storage/Formal Garage



Main features

- Beautifully presented home on sought after private estate
- Fantastic size rooms throughout with versatile accommodation
- Lovely well maintained wrap around gardens
- Walking distance to village and seafront
- No ongoing chain



Nearest Schools

Primary Schools: East Preston Junior School 0.3 miles, Georgian Gardens Community Primary 0.9 miles, Ferring CofE Primary 1.2 miles

Secondary Schools: Angmering School, The 0.9 miles,



Transport Information

Train Stations: Angmering 0.8 miles, Goring-by-Sea 1.8 miles, Durrington-on-Sea 2.7 miles



Address

Golden Avenue, East Preston, West Sussex, BN16



Directions

For directions to this property please contact us.



cubitt&west
Helping you move forwards

Call Rustington Branch 01903 775576 ■ cubittandwest.co.uk



■ Legal advice should be taken to verify fixtures/fittings, planning, alterations and/or lease details ■ Appliances & services are untested, dimensions are approximate and floor plans are not to scale
■ Through a Homewise Home For Life Plan people aged 60+ can secure this property for up to 59% less, by purchasing a Lifetime Lease.



23707949/20231230/KH/KP