



Price

£339,995

Freehold

2x  2x  1x 

**Plot", Langmead Place,
Angmering, West
Sussex, BN16**

cubitt&west
Helping you move forwards



Main features

- Brand new development in sought after Angmering Village
- Open plan living and dining area
- Integrated kitchen appliances
- Roca sanitary ware to bathroom
- En-suite and family bathroom
- Carport with 2 parking spaces

Accommodation

GROUND FLOOR

Entrance Hallway

Cloakroom

Kitchen: 11'9 x 6'6 (3.58m x 1.98m)

Lounge/Dining Room: 15'4 x 13'10
maximum (4.68m x 4.22m)

FIRST FLOOR

Landing

Bedroom 1: 12'9 x 10'5 maximum (3.89m x 3.18m)

En-suite Shower Room

Bedroom 2: 13'10 x 7'5 (4.22m x 2.26m)

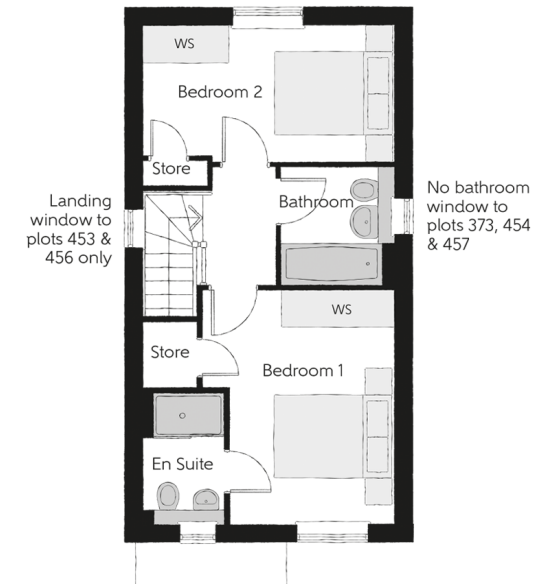
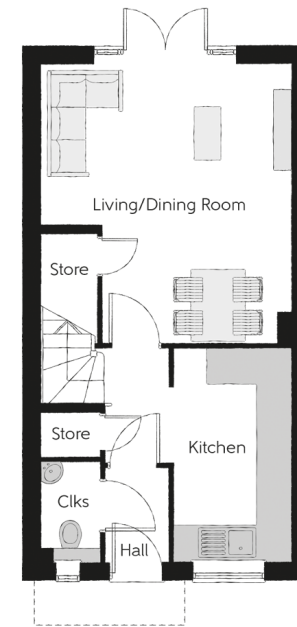
Family Bathroom

OUTSIDE

Front Garden

Rear Garden

Carport with 2 spaces



Call Rustington - 01903 775576 ■ cubittandwest.co.uk

- If buying to let, the energy rating will need to be improved to at least 'E' rating before you can let the property
- Legal advice should be taken to verify fixtures/fittings, planning, alterations and/or lease details
- Appliances & services are untested, dimensions are approximate and floor plans are not to scale



23708136/20240425/KP/KP