

OVER 60?

Secure this property
for up to **59% less!**



Guide Price
£310,000
Freehold

2x  1x  1x 

Beacon Way, Littlehampton, West Sussex,
BN17

cubitt & west
Helping you move forwards



Main features

- Beautifully presented home on sought after Beaumont Park
- Fantastic open plan downstairs accommodation
- Attractive garden with workshop
- Garage en bloc
- Ideal first time buy or investment opportunity
- Walking distance to Village

Accommodation

GROUND FLOOR

Entrance Hallway

Lounge: 15'6 x 12'11 (4.73m x 3.94m)

Kitchen: 9'6 x 7'9 (2.90m x 2.36m)

Dining Area: 14'3 x 10'10 (4.35m x 3.30m)

FIRST FLOOR

Landing

Bedroom 1: 15'1 x 8'10 (4.60m x 2.69m)

Bedroom 2: 12'5 x 6'6 (3.79m x 1.98m)

Bathroom

OUTSIDE

Front Garden

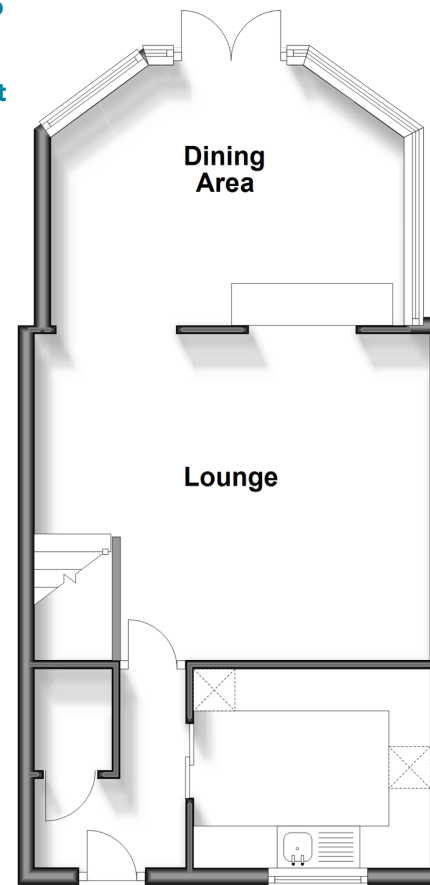
Rear Garden

Garage

Workshop

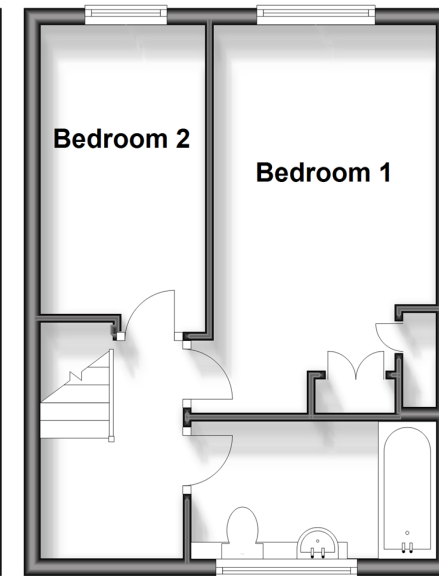
Ground Floor

Approx. 43.2 sq. metres (464.7 sq. feet)



First Floor

Approx. 30.5 sq. metres (328.4 sq. feet)



Call Rustington - 01903 775576 ■ cubittandwest.co.uk

- Legal advice should be taken to verify fixtures/fittings, planning, alterations and/or lease details
- Appliances & services are untested, dimensions are approximate and floor plans are not to scale
- Through a Homewise Home For Life Plan people aged 60+ can secure this property for up to 59% less, by purchasing a Lifetime Lease.



23708147/20240513/KP/KP