



Guide Price
£400,000

Freehold

3x  2x  2x 

**Victoria Road, Mayfield,
East Sussex, TN20**

OVER 60?

Secure this property
for up to **59% less!**

cubitt&west
Helping you move forwards



Main features

- An extended property located in a quiet cul-de-sac in popular Mayfield
- Spacious bright lounge, open plan to play area
- Stylish kitchen/dining area, perfect for entertaining
- Home office/workshop
- Stunning rear garden with elevated decked area

Accommodation

GROUND FLOOR

Hall

Lounge: 15'2 x 11'10 (4.63m x 3.61m)

Play Area: 8'11 x 8'11 (2.72m x 2.72m)

Dining Area: 12'11 x 10'11 (3.94m x 3.33m)

Kitchen: 14'5 x 8'9 (4.40m x 2.67m)

Cloakroom: 6'3 x 3'9 (1.91m x 1.14m)

FIRST FLOOR

Landing

Bedroom 1: 14'5 x 8'9 (4.40m x 2.67m)

En-suite Shower Room: 6'4 x 5'9 (1.93m x 1.75m)

Bedroom 2: 11'3 x 8'11 (3.43m x 2.72m)

Bedroom 3: 11'10 x 8'8 (3.61m x 2.64m)

Bathroom

OUTSIDE

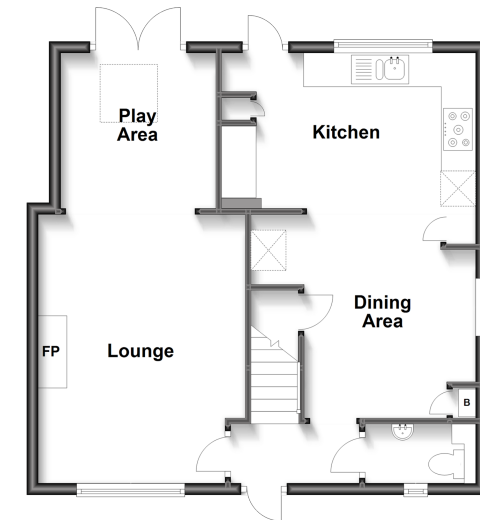
Rear Garden

Workshop/Shed

Garden Office

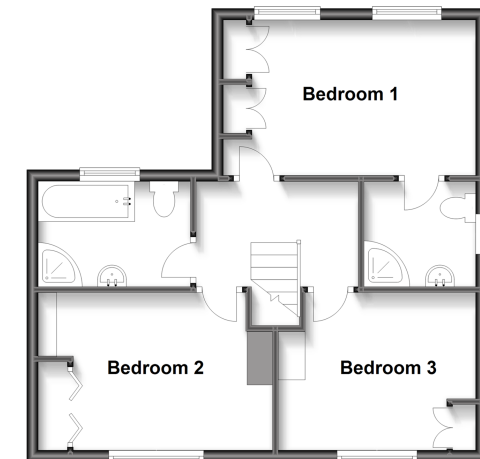
Ground Floor

Approx. 55.4 sq. metres (596.5 sq. feet)



First Floor

Approx. 47.8 sq. metres (514.5 sq. feet)



Call Crowborough - 01892 613361 ■ cubittandwest.co.uk

- Legal advice should be taken to verify fixtures/fittings, planning, alterations and/or lease details
- Appliances & services are untested, dimensions are approximate and floor plans are not to scale
- Through a Homewise Home For Life Plan people aged 60+ can secure this property for up to 59% less, by purchasing a Lifetime Lease.



24204769/20230921/JF/JF