



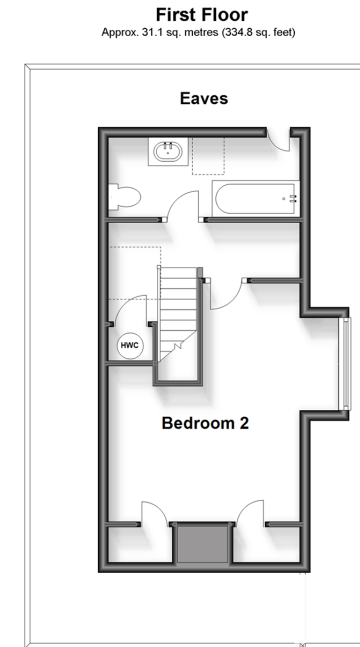
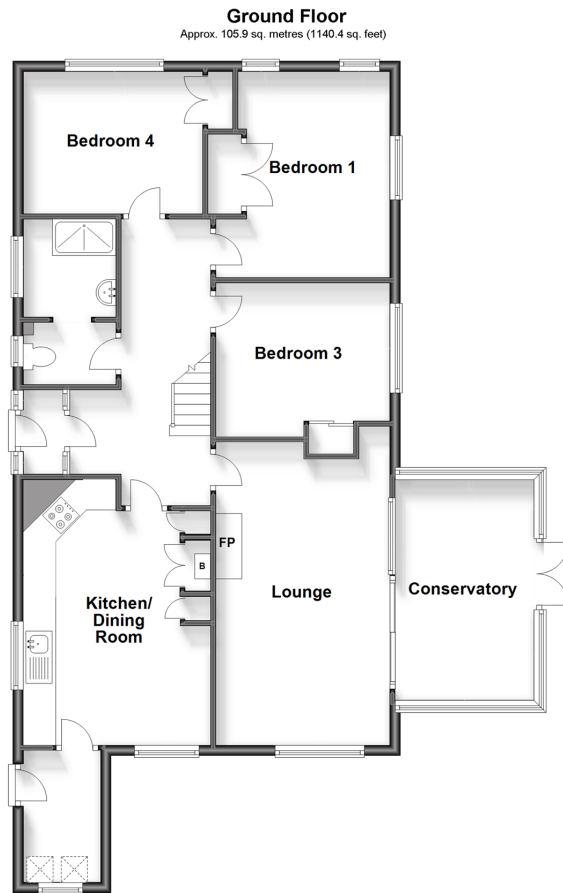
**Guide Price**  
**£750,000**

**Freehold**

4x  2x  1x 

**Five Ashes, Five Ashes,  
East Sussex, TN20**

**cubitt&west**  
Helping you move forwards



## Accommodation

### GROUND FLOOR

Porch

Hall: 18'0 x 5'6 (5.49m x 1.68m)

Kitchen/Dining Room: 16'6 x 11'10 (5.03m x 3.61m)

Utility Room: 8'4 x 4'10 (2.54m x 1.47m)

Lounge: 19'0 x 11'11 (5.80m x 3.63m)

Conservatory: 13'10 x 8'8 (4.22m x 2.64m)

Bedroom 1: 12'11 x 10'10 (3.94m x 3.30m)

Bedroom 3: 11'3 x 8'11 (3.43m x 2.72m)

Bedroom 4: 11'10 x 9'7 (3.61m x 2.92m)

Shower Room: 10'3 x 5'10 (3.13m x 1.78m)

### FIRST FLOOR

Landing

Bedroom 2: 14'10 x 12'0 (4.52m x 3.66m)

Bathroom: 12'1 x 5'0 (3.69m x 1.53m)

### OUTSIDE

Double Garage: 18'0 x 15'9 (5.49m x 4.80m)

Single Garage: 18'7 x 9'0 (5.67m x 2.75m)

Off Road Parking

Front, Side and Rear Gardens





## Main features

- Situated in the heart of the sought after Five Ashes Village
- Gated access into large private plot
- Extensive gardens perfect for large family gatherings
- Double and single garage and ample off road parking
- Spacious bright double aspect lounge and stunning conservatory



### Nearest Schools

Primary Schools: Five Ashes CofE Primary 0.2 miles, St Mark's C of E Primary 1.7 miles, Mayfield C of E Primary 2.3 miles  
Secondary Schools: Mayfield School 2.3 miles, Heathfield Community College 3.5 miles, Beacon Community College



### Transport Information

Train Stations: Crowborough 3.4 miles, Buxted 3.7 miles, Uckfield 5.8 miles



### Address

Five Ashes, Five Ashes, East Sussex, TN20



### Directions

For directions to this property please contact us.





**cubitt&west**  
Helping you move forwards

Call Crowborough Branch 01892 613361 ■ [cubittandwest.co.uk](https://www.cubittandwest.co.uk)



■ If buying to let, the energy rating will need to be improved to at least 'E' rating before you can let the property  
■ Appliances & services are untested, dimensions are approximate and floor plans are not to scale

■ Legal advice should be taken to verify fixtures/fittings, planning, alterations and/or lease details



24205521/20230720/JTA/JF