



Guide Price

£385,000

Leasehold

2x  2x  1x 

**Mayfield Grange, Little
Trodgers Lane, Mayfield,
East Sussex, TN20**

cubitt&west
Helping you move forwards



Main features

- Impressive modern apartment
- Spacious, open plan kitchen/living room
- Both bedrooms with en-suite facilities
- Secure entry system with lifts
- Underground parking, residents' gymnasium and stunning communal gardens

Accommodation

SECOND FLOOR

Hall: 12'8 x 4'7 (3.86m x 1.40m)

Kitchen/Living Room: 29'2 x 19'1 (8.90m x 5.82m)

Balcony

Bedroom 1: 20'11 maximum x 15'4 (6.38m x 4.68m)

En-Suite Bathroom: 9'2 x 5'7 (2.80m x 1.70m)

Bedroom 2: 16'3 maximum x 11'8 (4.96m x 3.56m)

Balcony 2

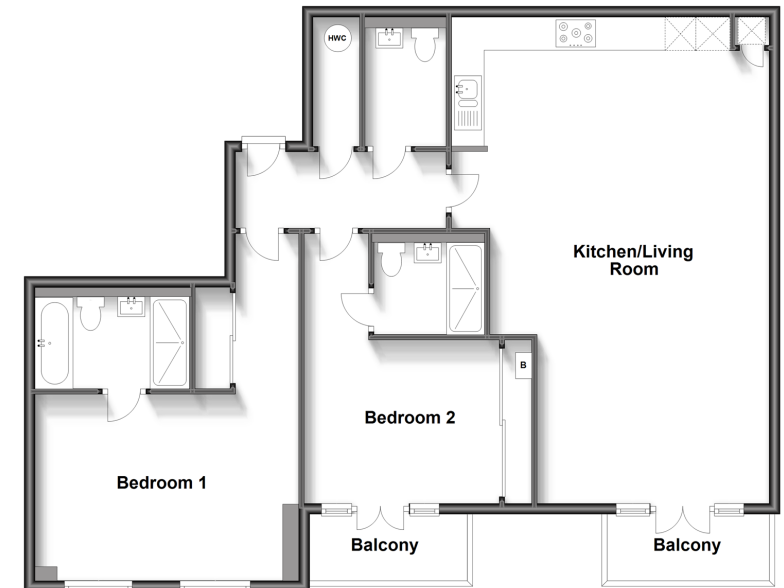
En-Suite Shower Room: 6'9 x 5'7 (2.06m x 1.70m)

Cloakroom: 7'2 x 4'11 (2.19m x 1.50m)

OUTSIDE

Underground Allocated Parking
Communal Garden
Residents' Gymnasium

Second Floor
Approx. 106.1 sq. metres (1141.8 sq. feet)



Call Crowborough - 01892 613361 ■ cubittandwest.co.uk

- Legal advice should be taken to verify fixtures/fittings, planning, alterations and/or lease details
- Appliances & services are untested, dimensions are approximate and floor plans are not to scale



24205576/20240423/CA/JF