



**Price**

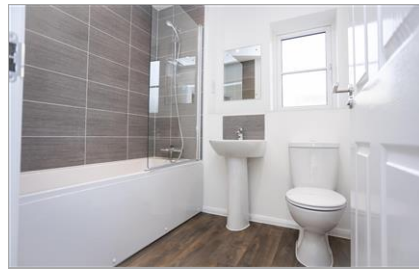
**£53,750**

**Leasehold**

2x  1x  1x 

**Northumberland Court,  
Bruce Gardens,  
Waterlooville,  
Hampshire, PO8**

**cubitt&west**  
Helping you move forwards



## Main features

- Available for shared ownership
- Brand new apartments
- Completion planned from Spring 2023
- Light and spacious living area
- Reserving off plan NOW!



### Nearest Schools



### Transport Information

## Accommodation

Please see full brochure

**Call Shared Ownership - 01403 602681 ■ [cubittandwest.co.uk](http://cubittandwest.co.uk)**

- If buying to let, the energy rating will need to be improved to at least 'E' rating before you can let the property
- Appliances & services are untested, dimensions are approximate and floor plans are not to scale

- Legal advice should be taken to verify fixtures/fittings, planning, alterations and/or lease details



24302127/20230116/MIC/MIC