



**Price**

**£110,000**

**Leasehold**

3x  1x  1x 

Plot 27, Portland Close, Langley,  
Maidstone, Kent, ME17

**cubitt&west**  
Helping you move forwards





## Main features

- Available for shared ownership from a 25% share
- Contemporary fitted kitchen and bathroom
- Private rear garden with storage shed
- RESERVING NOW!

## Accommodation

### GROUND FLOOR

Kitchen: 10'11 x 9'11 (3.33m x 3.02m)  
Living room: 16'6 x 15'8 (5.03m x 4.78m)  
Cloakroom: 8'7 x 5'0 (2.62m x 1.53m)

### FIRST FLOOR

Bedroom 1: 15'8 x 9'3 (4.78m x 2.82m)  
Bedroom 2: 15'4 x 8'4 (4.68m x 2.54m)  
Bedroom 3: 11'10 x 7'0 (3.61m x 2.14m)  
Bathroom

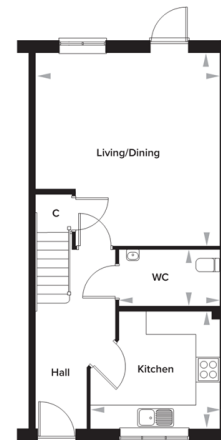
### OUTSIDE

Private rear garden  
Allocated Parking

## Rosewood, Maidstone, Kent

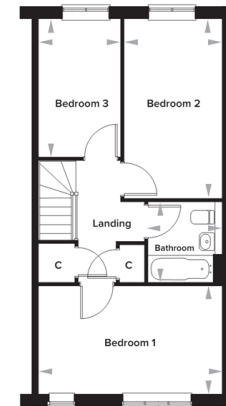
### The Tillman 3 Bedroom Semi-Detached House

Plots 27, 135 and 137



#### Ground Floor

Kitchen	3345mm x 3028mm	10' 11" x 9' 11"
Living Dining	4788mm x 5042mm	15' 8" x 16' 6"
WC	2607mm x 1457mm	8' 7" x 5' 0"



#### First Floor

Bedroom 1	4788mm x 2818mm	15' 8" x 9' 3"
Bedroom 2	2550mm x 4693mm	8' 4" x 15' 4"
Bedroom 3	2150mm x 3612mm	7' 0" x 11' 10"
Bathroom	1928mm x 2094mm	6' 4" x 6' 10"

Please note dimensions are approximate +/- 50mm and are not intended to be used for carpet sizes, appliance spaces or furniture items.

**Call Shared Ownership - 01403 602681 ■ [cubittandwest.co.uk](https://cubittandwest.co.uk)**

■ Legal advice should be taken to verify fixtures/fittings, planning, alterations and/or lease details

■ Appliances & services are untested, dimensions are approximate and floor plans are not to scale



24302214/20230807/MIC/MIC