



Price

£1,050,000

Freehold

6x  3x  2x 

**Redwood Close, Kenley,
Surrey, CR8**



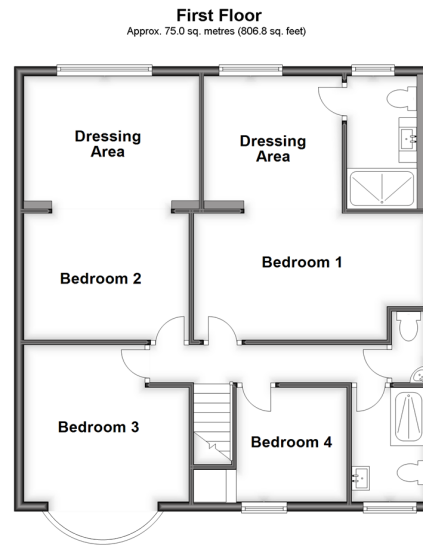
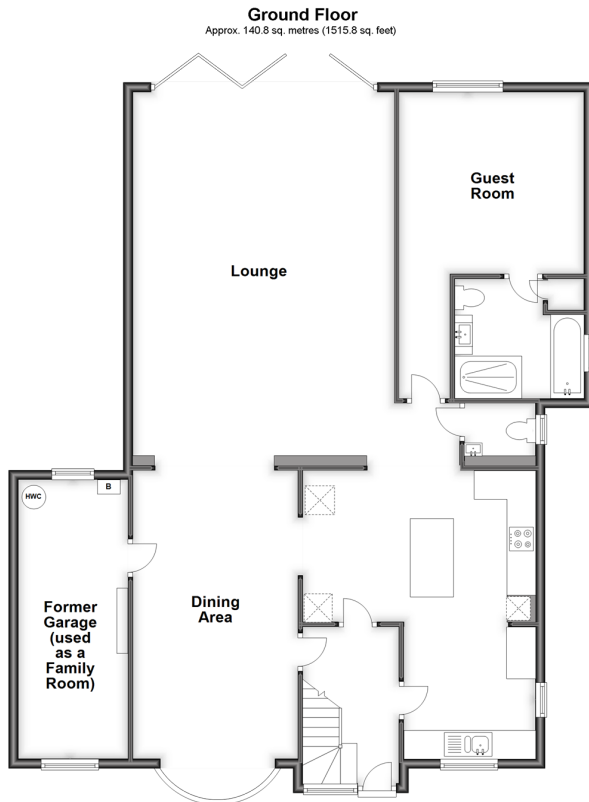
Video Tour available

cubitt&west
Helping you move forwards

Accommodation

GROUND FLOOR

Entrance Hall
Kitchen
Dining Area
Lounge
Cloakroom
Guest Room
En-Suite Bathroom
Family Room



FIRST FLOOR

Landing
Bedroom 1
Dressing Area
En-Suite Shower Room
Bedroom 2
Dressing Area
Bedroom 3
Bedroom 4
Shower Room
Separate Toilet

OUTSIDE

Front Garden
Rear Garden
Driveway



Main features

- Large detached family home with off street parking for many cars
- Presented to a high standard with all modern fixtures & fittings
- Bi-fold doors from the lounge into the pretty rear garden with patio area
- Walking distance to Kenley station, shops and excellent schools for all ages
- Downstairs guest room with en-suite bathroom



Nearest Schools

Primary Schools: Harris Primary 0.3 miles, The Hayes Primary 0.5 miles, The Wattenden Primary 0.7 miles
Secondary Schools: Riddlesdown High School 0.5 miles, Warlingham School 1.4 miles, Kingsdown Secondary School 1.5 miles



Transport Information

Train Stations: Kenley 0.1 miles, Riddlesdown 0.6 miles, Reedham 1.0 miles



Address

Redwood Close, Kenley, Surrey, CR8



Directions

For directions to this property please contact us.



cubitt&west
Helping you move forwards

Call Purley Branch 020 8660 8882 ■ cubittandwest.co.uk



- A private rental licensing scheme applies to some properties in this area, please contact us before proceeding
- Appliances & services are untested, dimensions are approximate and floor plans are not to scale

- Legal advice should be taken to verify fixtures/fittings, planning, alterations and/or lease details



24401908/20220623/DI/TS