



**OVER 60?**

Secure this property  
for up to **59% less!**

**Price**

**£650,000**

**Freehold**

4x  3x  1x 

**White Hill Close,  
Caterham, Surrey, CR3**

**cubitt&west**  
Helping you move forwards





## Main features

- Large bedroom town house set within a private, gated development
- Wonderful views over Caterham School playing fields
- Garage en-bloc as well as a drive way for two cars
- Bi-fold doors from the lounge into the conservatory

## Accommodation

### GROUND FLOOR

Entrance Hall: 21'9 x 6'8 (6.63m x 2.03m)

Kitchen/Breakfast Room: 19'4 x 9'6 (5.90m x 2.90m)

Cloakroom

Lounge: 15'4 x 14'7 (4.68m x 4.45m)

Dining Area: 14'1 x 10'2 (4.30m x 3.10m)

### FIRST FLOOR

Landing

Bedroom 2: 13'9 x 10'4 (4.19m x 3.15m)

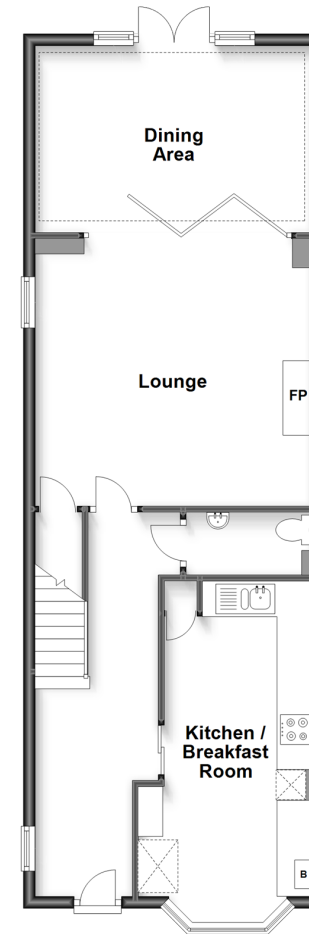
En-Suite

Walk In Wardrobe

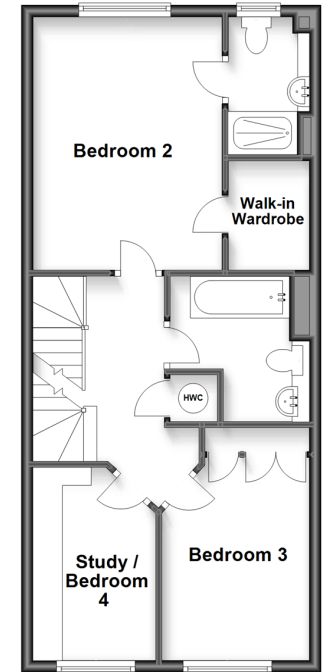
**Call Caterham - 01883 331000 ■ [cubittandwest.co.uk](http://cubittandwest.co.uk)**

- Legal advice should be taken to verify fixtures/fittings, planning, alterations and/or lease details
- Appliances & services are untested, dimensions are approximate and floor plans are not to scale
- Through a Homewise Home For Life Plan people aged 60+ can secure this property for up to 59% less, by purchasing a Lifetime Lease.

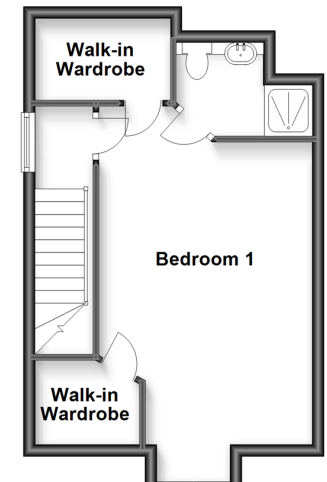
**Ground Floor**  
Approx. 67.3 sq. metres (724.5 sq. feet)



**First Floor**  
Approx. 50.7 sq. metres (545.9 sq. feet)



**Second Floor**  
Approx. 32.8 sq. metres (353.0 sq. feet)



24405787/20240319/LP/LP