



Price
£280,000

Leasehold

3x  1x  1x 

**Joseph Court, William
Road, Caterham, Surrey,
CR3**

OVER 60?

Secure this property
for up to **59% less!**

cubitt & west
Helping you move forwards



Main features

- Lower ground floor apartment
- Allocated parking space
- Open plan living at its finest leading out to a small terrace
- Walking distance to shops & transport links
- Perfect first home or to add to your portfolio

Accommodation

LOWER GROUND FLOOR

Entrance Hall

Lounge/Diner: 16'0 x 10'8 (4.88m x 3.25m) plus 10'7 x 8'8 (3.23m x 2.64m)

Kitchen: 13'9 x 13'0 (4.19m x 3.97m)

Bedroom 1: 18'2 x 13'2 (5.54m x 4.02m)

Bedroom 2: 13'4 x 10'11 (4.07m x 3.33m)

Bedroom 3: 12'1 x 6'1 (3.69m x 1.86m)

Bathroom

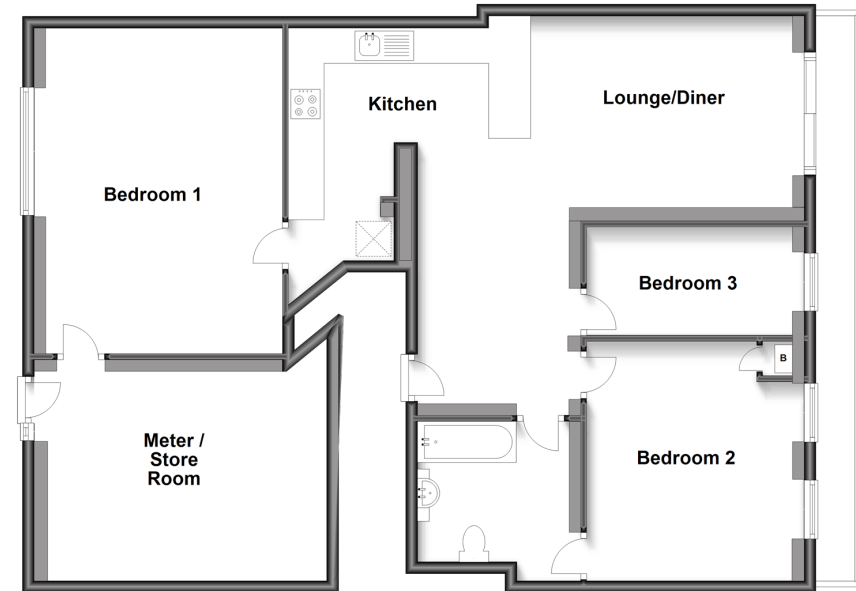
Meter/Store Room

OUTSIDE

Allocated Parking

Communal Gardens

Lower Ground Floor
Approx. 93.5 sq. metres (1006.5 sq. feet)



Call Caterham - 01883 331000 ■ cubittandwest.co.uk

- Legal advice should be taken to verify fixtures/fittings, planning, alterations and/or lease details
- Appliances & services are untested, dimensions are approximate and floor plans are not to scale
- Through a Homewise Home For Life Plan people aged 60+ can secure this property for up to 59% less, by purchasing a Lifetime Lease.



24405897/20230621/BG/BG