



Price

£90,000

Leasehold

1x  1x  1x 

**Asprey Court, Stafford
Road, Caterham, Surrey,
CR3**



Video Tour available

cubitt&west
Helping you move forwards



Main features

- **Wonderfully presented retirement home**
- **Direct access to lovely communal gardens**
- **Close to local shops, amenities and transport links**
- **Easy access throughout**
- **Residents permit parking and laundry room**

Accommodation

LOWER THIRD FLOOR

Entrance Hall

Lounge/Diner: 18'0 x 10'0 (5.49m x 3.05m)

Kitchen: 7'0 x 7'0 (2.14m x 2.14m)

Bedroom: 15'0 x 9'0 (4.58m x 2.75m)

Bathroom

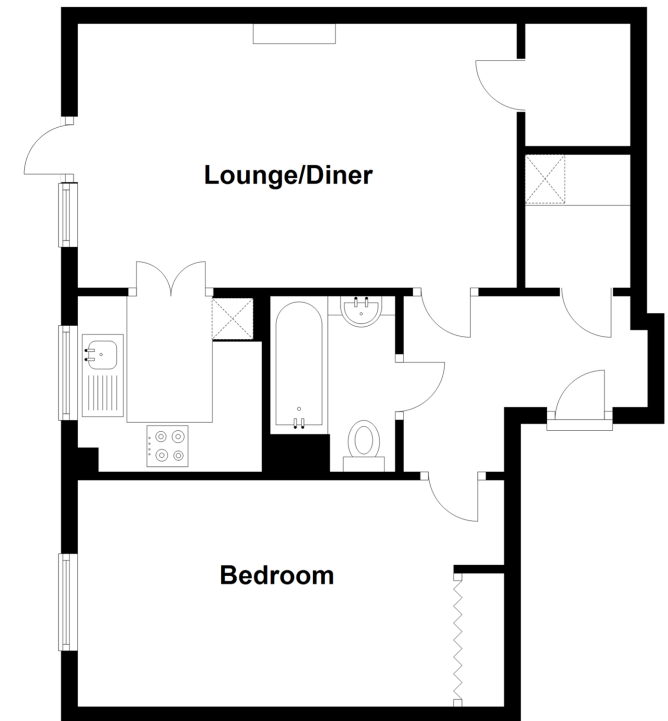
OUTSIDE

Communal Gardens

Residents Permit Parking

Lower Third Floor (Ground Level)

Approx. 50.7 sq. metres (545.7 sq. feet)



Call Caterham - 01883 331000 ■ cubittandwest.co.uk

- Legal advice should be taken to verify fixtures/fittings, planning, alterations and/or lease details
- Appliances & services are untested, dimensions are approximate and floor plans are not to scale



24406985/20230612/BG/BG