



Price

£200,000

Leasehold

2x  1x  1x 

**Asprey Court, Stafford
Road, Caterham, Surrey,
CR3**



Video Tour available

cubitt&west
Helping you move forwards



Main features

- Chain free! Larger than average ground floor retirement flat
- Private patio area leading out to the stunning communal gardens
- Residents' lounge & guest suite
- Convenient lift access to all floors
- Close to Caterham town centre for all your shopping needs

Accommodation

GROUND FLOOR

Entrance Hall

Lounge/Diner: 28'2 x 10'5 (8.59m x 3.18m)

Kitchen: 7'5 x 7'0 (2.26m x 2.14m)

Bedroom 1: 17'2 x 9'3 (5.24m x 2.82m)

Bedroom 2: 17'2 x 9'3 (5.24m x 2.82m)

Bathroom: 6'8 x 5'5 (2.03m x 1.65m)

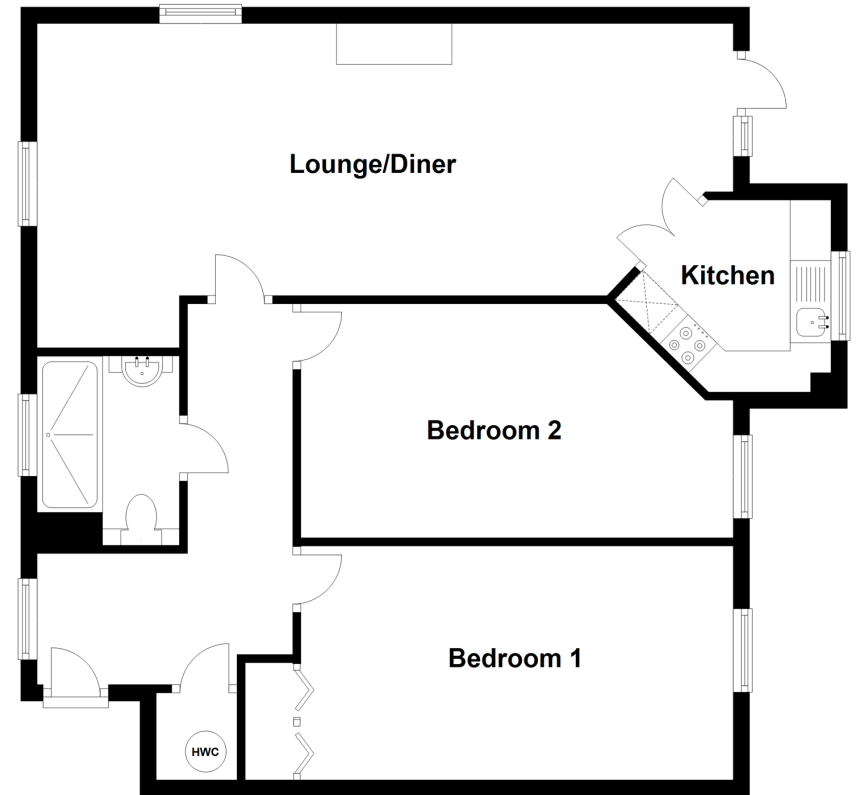
OUTSIDE

Private Patio

Communal Gardens

Ground Floor

Approx. 79.3 sq. metres (853.6 sq. feet)



Call Caterham - 01883 331000 ■ cubittandwest.co.uk

- Legal advice should be taken to verify fixtures/fittings, planning, alterations and/or lease details
- Appliances & services are untested, dimensions are approximate and floor plans are not to scale



24407091/20220215/HM/BG