



Price

£100,000

Leasehold

2x  1x  1x 

**Bourne Court, Croydon
Road, Caterham, Surrey,
CR3**



Video Tour available

cubitt&west
Helping you move forwards



Main features

- Well presented retirement flat in the centre of Caterham Valley
- Double bedrooms with one having built in wardrobes
- Juliet Balcony that floods in natural light
- Beautifully kept communal gardens & secure residents parking
- Chain Free

Accommodation

THIRD FLOOR

Entrance Hall

Living/Dining: 23'1 x 10'6 (7.04m x 3.20m)

Kitchen: 7'5 x 7'3 (2.26m x 2.21m)

Bedroom 1 : 13'5 x 9'3 (4.09m x 2.82m)

Bedroom 2: 13'5 x 9'5 (4.09m x 2.87m)

Bathroom: 7'0 x 5'5 (2.14m x 1.65m)

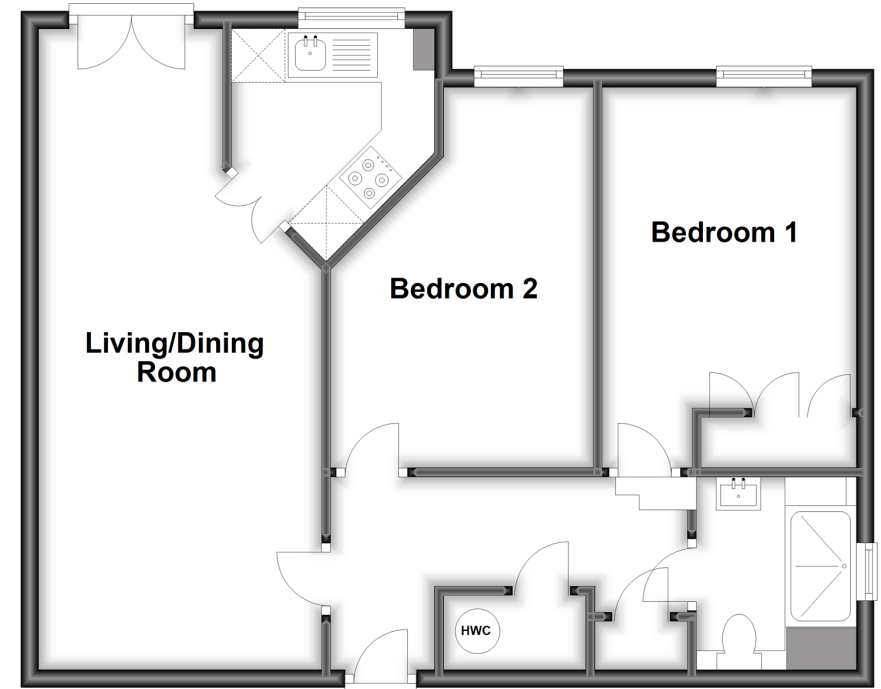
Outside

Communal Gardens

Private Parking

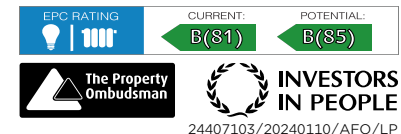
Third Floor

Approx. 62.5 sq. metres (672.9 sq. feet)



Call Caterham - 01883 331000 ■ cubittandwest.co.uk

- Legal advice should be taken to verify fixtures/fittings, planning, alterations and/or lease details
- Appliances & services are untested, dimensions are approximate and floor plans are not to scale



24407103/20240110/AFO/LP