



Price

£125,000

Leasehold

2x  1x  1x 

**Roseneath Court,
Greenwood Gardens,
Caterham, Surrey, CR3**



Video Tour available

cubitt&west
Helping you move forwards



Main features

- A beautifully presented and spacious home first floor retirement flat
- Plenty of storage and a communal conservatory
- Chain free buyers only as chain free
- Close to town centre, shops and station
- Well kept communal grounds & off street parking

Accommodation

FIRST FLOOR

Entrance Hall

Lounge/Diner: 15'0 x 11'1 (4.58m x 3.38m)

Kitchen: 11'2 x 6'3 (3.41m x 1.91m)

Bedroom 1: 9'9 x 8'1 (2.97m x 2.47m)

Bedroom 2: 12'1 x 6'6 (3.69m x 1.98m)

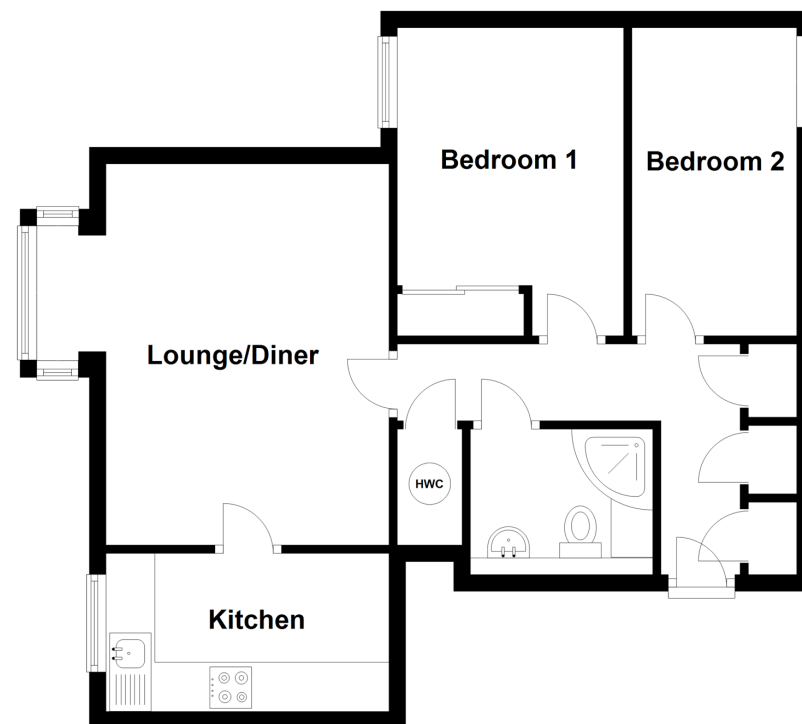
Shower Room

OUTSIDE

Communal Gardens

First Floor

Approx. 55.4 sq. metres (596.3 sq. feet)



Call Caterham - 01883 331000 ■ cubittandwest.co.uk

- Legal advice should be taken to verify fixtures/fittings, planning, alterations and/or lease details
- Appliances & services are untested, dimensions are approximate and floor plans are not to scale