



Price
£650,000

Freehold

3x  3x  1x 

**Tupwood Gardens,
Caterham, Surrey, CR3**

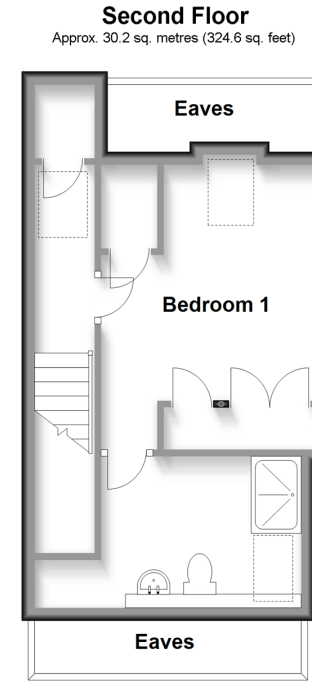
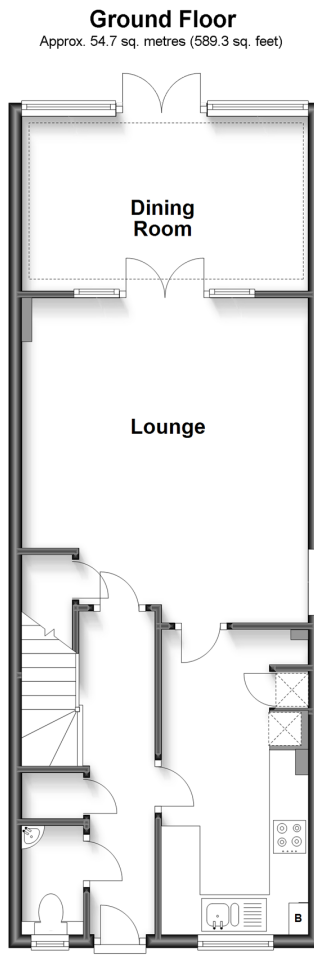
OVER 60?

Secure this property
for up to **59% less!**



Video Tour available

cubitt&west
Helping you move forwards



Accommodation

GROUND FLOOR

Entrance Hall
Kitchen: 15'0 x 7'3 (4.58m x 2.21m)
Lounge: 15'3 x 14'5 (4.65m x 4.40m)
Dining Room: 14'6 x 9'3 (4.42m x 2.82m)
Cloakroom

FIRST FLOOR

Landing

Bedroom 2: 14'4 x 12'4 (4.37m x 3.76m)
En-Suite
Bedroom 3: 14'4 x 7'9 (4.37m x 2.36m)
Family Bathroom: 7'8 x 6'1 (2.34m x 1.86m)

SECOND FLOOR

Landing
Bedroom 1: 12'3 x 11'0 (3.74m x 3.36m)
En-Suite: 10'0 x 6'5 (3.05m x 1.96m)

OUTSIDE

Rear Garden
Allocated Parking



Main features

- Located witting a gated private road
- Bedroom one & two both benefit from en-suites
- Two allocated parking spaces & solar panels for hot water
- Walking distance to Caterham Station & local woodlands
- Dining room leading on from the lounge and into the garden



Nearest Schools

Primary Schools: St John's CofE Aided Primary 0.9 miles, Hillcroft Primary 1.5 miles, Marden Lodge Primary 1.6 miles

Secondary Schools: Caterham School 0.9 miles, Clifton Hill



Transport Information

Train Stations: Caterham 0.6 miles, Whyteleafe 2.3 miles, Whyteleafe South 3.0 miles



Address

Tupwood Gardens, Caterham, Surrey, CR3



Directions

For directions to this property please contact us.



cubitt&west
Helping you move forwards

Call Caterham Branch 01883 331000 ■ cubittandwest.co.uk



- Legal advice should be taken to verify fixtures/fittings, planning, alterations and/or lease details
- Appliances & services are untested, dimensions are approximate and floor plans are not to scale
- Through a Homewise Home For Life Plan people aged 60+ can secure this property for up to 59% less, by purchasing a Lifetime Lease.



24407211/20230329/HM/LP