



**OVER 60?**

You could get up to  
**59% off** the price!\*



Video Tour available

**Price**

**£250,000**

**Leasehold**

1x  1x  1x 

**Orbital House, Croydon  
Road, Caterham, Surrey,  
CR3**

**cubitt&west**  
Helping you move forwards





## Main features

- Ground floor apartment within a modern block
- Allocated parking space to the rear
- Walking distance to Caterham Valley shops & transport links
- Only six years old and offered in great condition
- Chain free

## Accommodation

### GROUND FLOOR

**Entrance Hall:** 11'3 minimum x 7'0 (3.43m x 2.14m)

**Lounge/Dining Area:** 23'0 x 12'0 (7.02m x 3.66m)

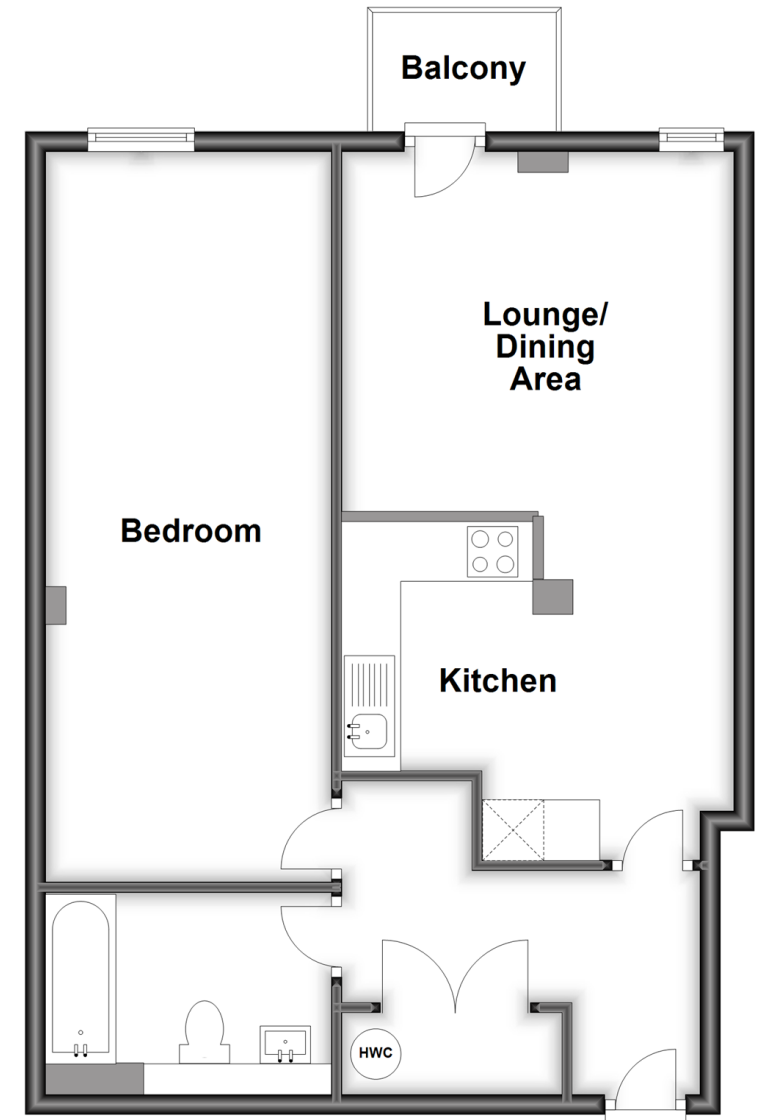
### Kitchen

**Bedroom 1:** 23'0 x 8'1 (7.02m x 2.47m)

**Bathroom:** 9'2 x 6'0 (2.80m x 1.83m)

## Ground Floor

Approx. 60.1 sq. metres (647.1 sq. feet)



**Call Caterham - 01883 331000 ■ [cubittandwest.co.uk](http://cubittandwest.co.uk)**

- Legal advice should be taken to verify fixtures/fittings, planning, alterations and/or lease details
- Appliances & services are untested, dimensions are approximate and floor plans are not to scale
- Our Homewise partnership offer a 'Home for Life' plan to buyers over 60, granting a lifetime lease for your protection and reducing the purchase price by up to 59%