



OVER 60?

You could get up to
59% off the price!*



Video Tour available

Price

£280,000

Leasehold

2x  1x  1x 

**Holly House, Aspen
Vale, Whyteleafe,
Surrey, CR3**

cubitt&west
Helping you move forwards



Main features

- Large second floor apartment with private loft space
- Two allocated parking spaces & visitor bays
- Walking distance to three stations
- Both bedrooms are great size doubles
- Communal garden

Accommodation

SECOND FLOOR

Entrance Hall

Lounge/Diner: 19'9 x 12'0 (6.02m x 3.66m)

Kitchen: 7'11 x 6'4 (2.41m x 1.93m)

Bedroom 1: 15'6 x 12'2 (4.73m x 3.71m)

Bedroom 2: 14'8 x 10'5 (4.47m x 3.18m)

Bathroom

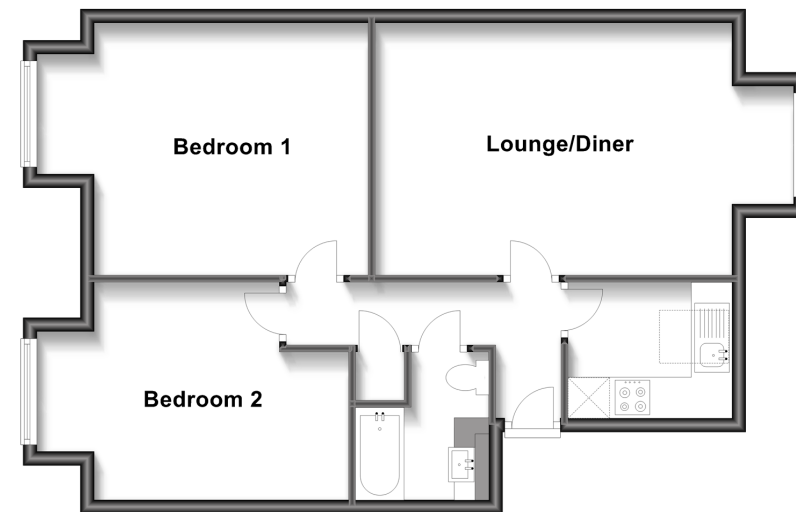
OUTSIDE

Allocated Parking

Communal Grounds

Second Floor

Approx. 63.7 sq. metres (685.9 sq. feet)



Call Caterham - 01883 331000 ■ cubittandwest.co.uk

- Legal advice should be taken to verify fixtures/fittings, planning, alterations and/or lease details
- Appliances & services are untested, dimensions are approximate and floor plans are not to scale
- Our Homewise partnership offer a 'Home for Life' plan to buyers over 60, granting a lifetime lease for your protection and reducing the purchase price by up to 59%



24407272/20221026/LP/LP