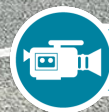




OVER 60?

You could get up to
59% off the price!*



Video Tour available

Price

£300,000

Leasehold

2x  1x  1x 

**St. Lukes Court,
Whyteleafe Hill,
Whyteleafe, Surrey, CR3**

cubitt&west
Helping you move forwards



Main features

- Ground floor maisonette
- Tastefully & neutrally decorated throughout
- Allocated parking space
- Walking distance to two stations
- Ideal for a first time buyer or investor

Accommodation

GROUND FLOOR

Entrance Hall: 9'0 x 9'0 (2.75m x 2.75m)

Living Room/Kitchen: 27'0 x 9'1 (8.24m x 2.77m)

Bedroom 1: 12'0 x 8'0 (3.66m x 2.44m)

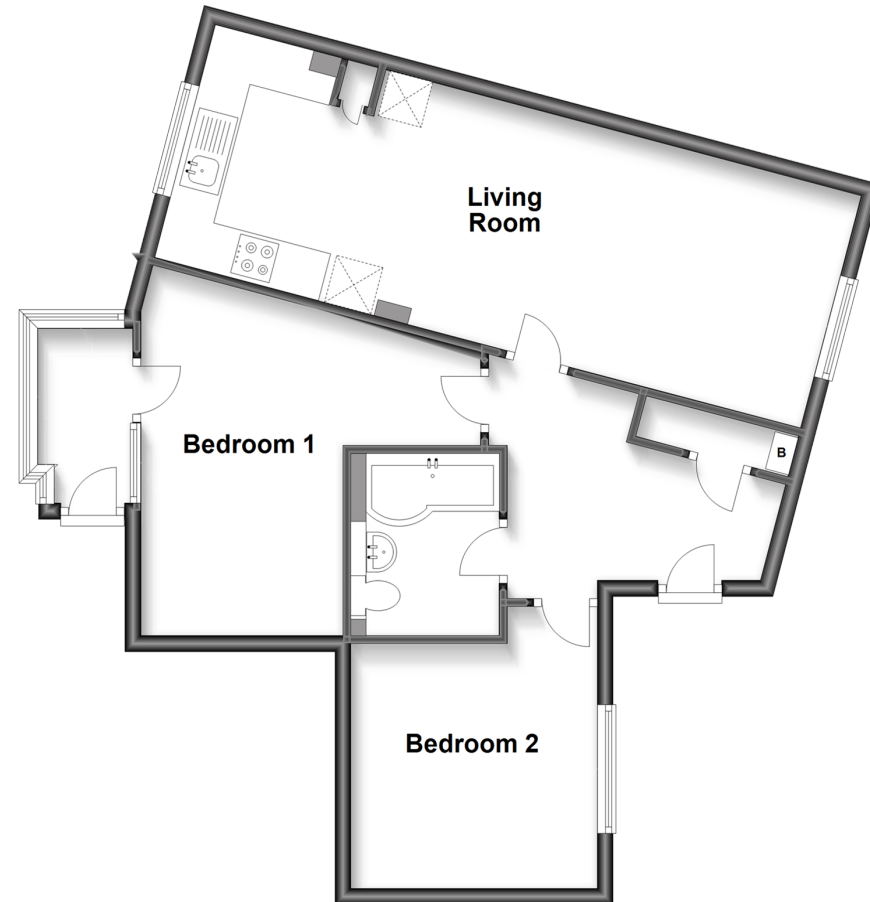
Bedroom 2: 10'0 x 10'0 (3.05m x 3.05m)

Bathroom: 7'0 x 6'0 (2.14m x 1.83m)

OUTSIDE

Rear Porch

Ground Floor
Approx. 63.3 sq. metres (681.2 sq. feet)



Call Caterham - 01883 331000 ■ cubittandwest.co.uk

- Legal advice should be taken to verify fixtures/fittings, planning, alterations and/or lease details
- Appliances & services are untested, dimensions are approximate and floor plans are not to scale
- Our Homewise partnership offer a 'Home for Life' plan to buyers over 60, granting a lifetime lease for your protection and reducing the purchase price by up to 59%



24407280/20220825/BG/BG