



OVER 60?

Secure this property
for up to **59% less!**



Video Tour available

Price

£500,000

Freehold

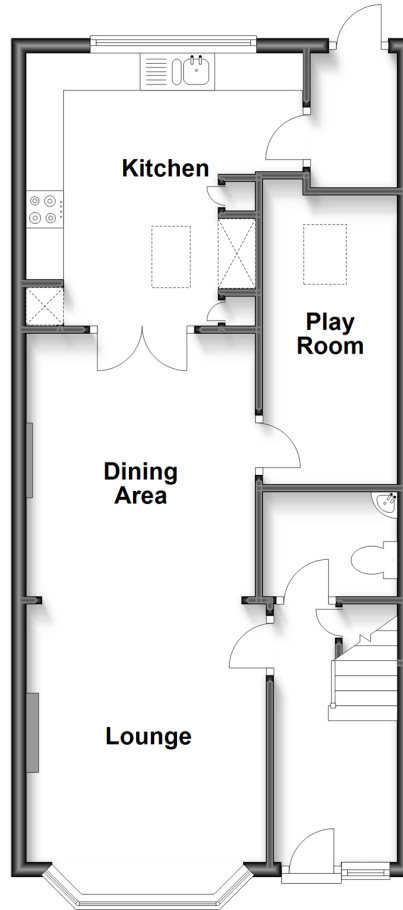
3x  1x  2x 

**Eldon Road, Caterham,
Surrey, CR3**

cubitt&west
Helping you move forwards

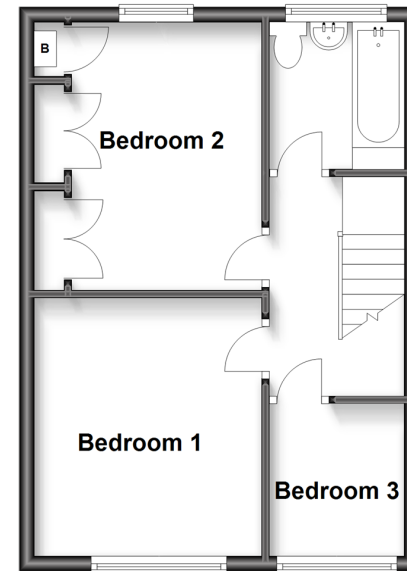
Ground Floor

Approx. 53.8 sq. metres (578.7 sq. feet)



First Floor

Approx. 35.7 sq. metres (384.2 sq. feet)



Accommodation

GROUND FLOOR

Entrance Hall

Kitchen: 12'1 x 11'9 (3.69m x 3.58m)

Dining Area

Lounge: 25'8 x 10'1 (7.83m x 3.08m)

Play Room: 12'9 x 5'8 (3.89m x 1.73m)

W/C: 5'8 x 4'5 (1.73m x 1.35m)

Bedroom 1: 12'0 x 9'9 (3.66m x 2.97m)

Bedroom 2 : 11'7 up to fitted wardrobes x 8'3
(3.53m x 2.52m)

Bedroom 3: 6'6 x 5'9 (1.98m x 1.75m)

Bathroom: 6'5 x 5'9 (1.96m x 1.75m)

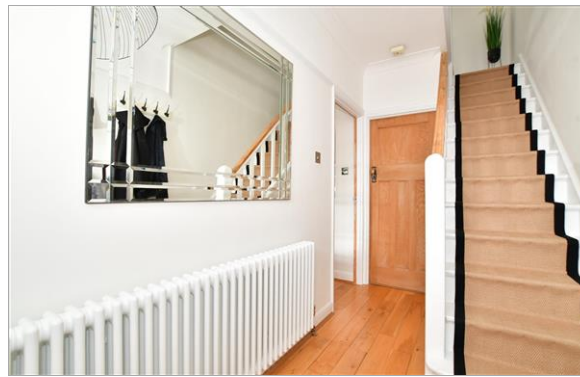
OUTSIDE

Driveway

Rear Garden

FIRST FLOOR

Landing



Main features

- Semi-detached family home with driveway for multiple cars
- Study/play room with sky light
- Open plan living with extended kitchen
- Well presented landscape garden
- Walking distance to Coulsdon Common & local bus routes



Nearest Schools

Primary Schools: Audley Primary 0.4 miles, St Francis Catholic Primary 0.4 miles, Hillcroft Primary 0.6 miles

Secondary Schools: Sunnydown School 0.4 miles, de Stafford School 0.6 miles, Clifton Hill School 0.6 miles



Transport Information

Train Stations: Whyteleafe South 1.1 miles, Upper Warlingham 1.2 miles, Caterham 1.2 miles



Address

Eldon Road, Caterham, Surrey, CR3



Directions

For directions to this property please contact us.



cubitt&west
Helping you move forwards

Call Caterham Branch 01883 331000 ■ cubittandwest.co.uk



■ Legal advice should be taken to verify fixtures/fittings, planning, alterations and/or lease details ■ Appliances & services are untested, dimensions are approximate and floor plans are not to scale
■ Through a Homewise Home For Life Plan people aged 60+ can secure this property for up to 59% less, by purchasing a Lifetime Lease.



24407308/20220924/HM/LP