



Price
£500,000

Freehold

3x  3x  1x 

**Moberly Way, Kenley,
Surrey, CR8**

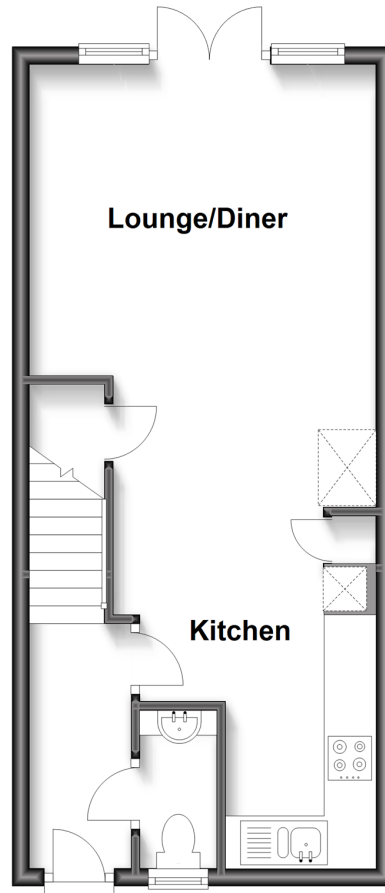
OVER 60?

Secure this property
for up to **59% less!**

cubitt&west
Helping you move forwards

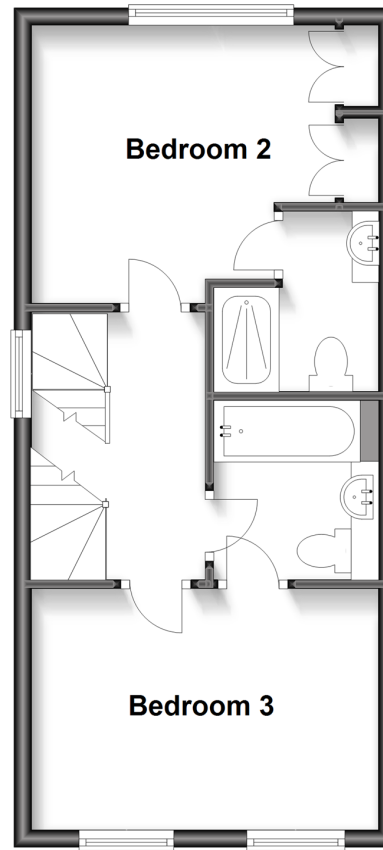
Ground Floor

Approx. 36.5 sq. metres (392.6 sq. feet)



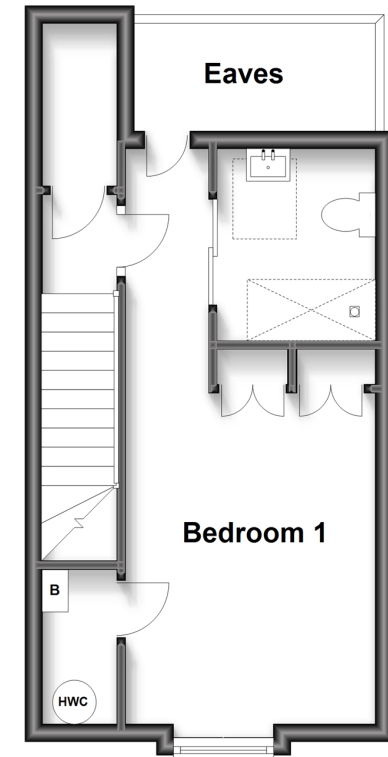
First Floor

Approx. 36.5 sq. metres (392.7 sq. feet)



Second Floor

Approx. 26.5 sq. metres (285.0 sq. feet)



Accommodation

GROUND FLOOR

Entrance Hall
Lounge/Diner: 12'9 x 12'7 (3.89m x 3.84m)
Kitchen: 16'6 x 9'3 (5.03m x 2.82m)
Cloakroom

FIRST FLOOR

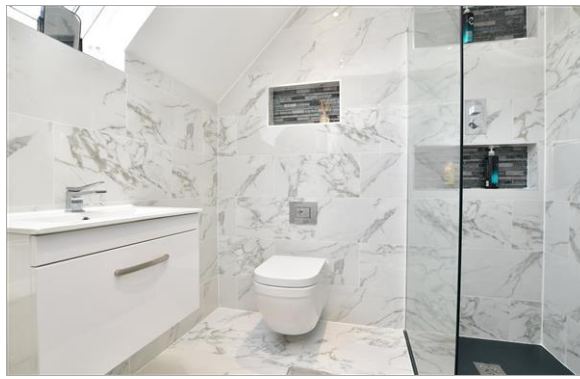
Landing
Bedroom 2: 13'0 x 8'9 (3.97m x 2.67m)
En-suite Shower Room: 6'7 x 3'7 (2.01m x 1.09m)
Bedroom 3: 10'9 x 9'4 (3.28m x 2.85m)
Jack & Jill Bathroom: 6'7 x 6'2 (2.01m x 1.88m)

SECOND FLOOR

Landing
Bedroom 1: 14'0 up to door well x 9'5 (4.27m x 2.87m)
En-suite Shower Room: 7'0 x 5'1 (2.14m x 1.55m)
Eaves

OUTSIDE

Off Road Parking
Rear Garden



Main features

- Chain Free
- Walking distance to Kenley Aerodrome
- En-suite shower room to two bedrooms and Jack & Jill family bathroom
- Open plan living at its finest
- Located on a private executive development; prime but quiet location



Nearest Schools

Primary Schools: Audley Primary 0.4 miles, St Francis Catholic Primary 0.4 miles, Whyteleafe Primary 0.7 miles

Secondary Schools: Sunnydown School 0.4 miles, de Stafford School 0.6 miles, Coulsdon High School 0.8 miles

Transport Information

Train Stations: Whyteleafe South 0.8 miles, Whyteleafe 0.8 miles, Upper Warlingham 0.8 miles

Address

Moberly Way, Kenley, Surrey, CR8

Directions

For directions to this property please contact us.





cubitt&west
Helping you move forwards

Call Caterham Branch 01883 331000 ■ cubittandwest.co.uk



■ Legal advice should be taken to verify fixtures/fittings, planning, alterations and/or lease details ■ Appliances & services are untested, dimensions are approximate and floor plans are not to scale
■ Through a Homewise Home For Life Plan people aged 60+ can secure this property for up to 59% less, by purchasing a Lifetime Lease.



24407335/20231103/LP/LP