



Guide Price
£275,000

Leasehold

2x  1x  1x 

**Croydon Road,
Caterham, Surrey, CR3**

OVER 60?

Secure this property
for up to **59% less!**

cubitt&west
Helping you move forwards



Main features

- Ground floor maisonette set within a Victorian semi detached house
- Walking distance to Caterham station and shops
- High ceilings throughout and log burner to the living room
- Plenty of scope to make your own
- Chain free

Accommodation

GROUND FLOOR

Entrance Hall

Living Room: 16'9 x 15'5 (5.11m x 4.70m)

Kitchen: 15'2 x 7'7 (4.63m x 2.31m)

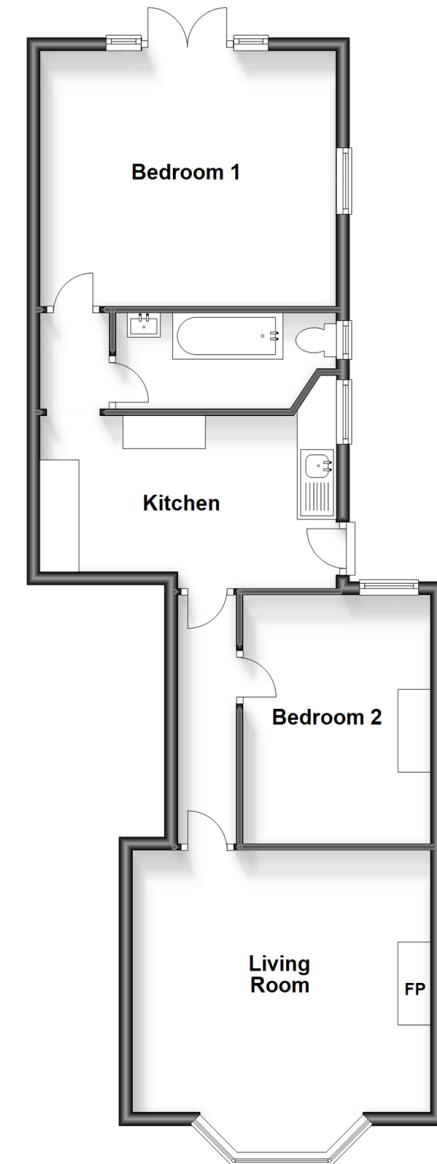
Bedroom 1: 14'6 x 12'4 (4.42m x 3.76m)

Bedroom 2: 12'1 x 9'4 (3.69m x 2.85m)

Bathroom: 11'2 x 4'3 (3.41m x 1.30m)

Ground Floor

Approx. 69.6 sq. metres (749.1 sq. feet)



Call Caterham - 01883 331000 ■ cubittandwest.co.uk

- Legal advice should be taken to verify fixtures/fittings, planning, alterations and/or lease details
- Appliances & services are untested, dimensions are approximate and floor plans are not to scale
- Through a Homewise Home For Life Plan people aged 60+ can secure this property for up to 59% less, by purchasing a Lifetime Lease.



24407362/20231108/LP/LP