



Price

£500,000

Leasehold

2x  2x  1x 

**The Gardens, Church
Hill, Caterham, Surrey,
CR3**

OVER 60?

Secure this property
for up to **59% less!**

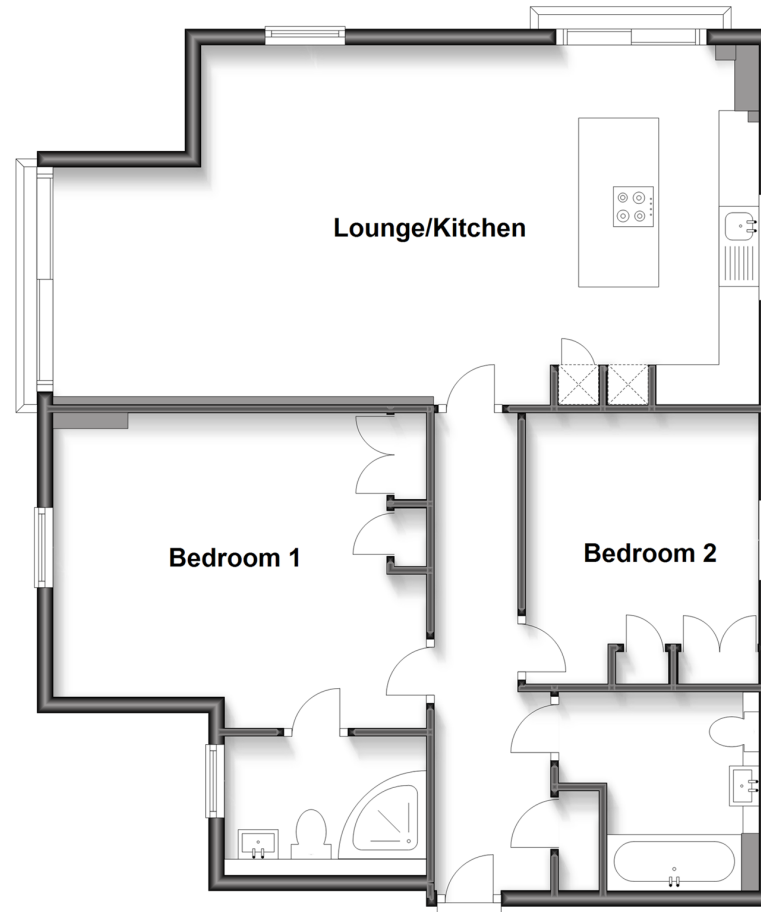


Video Tour available

cubitt&west
Helping you move forwards

Second Floor

Approx. 84.7 sq. metres (911.5 sq. feet)



Accommodation

SECOND FLOOR

Entrance Hall

Kitchen/Lounge: 29'0 x 16'0 (8.85m x 4.88m)

Bedroom 1: 14'0 x 13'0 (4.27m x 3.97m)

En-suite: 8'0 x 5'0 (2.44m x 1.53m)

Bedroom 2 : 11'0 x 9'0 (3.36m x 2.75m)

Bathroom: 7'11 x 7'0 (2.41m x 2.14m)

OUTSIDE

Communal Gardens

Allocated Parking



Main features

- **Luxury top floor apartment at The Gardens**
- **Under floor heating throughout**
- **Lift to all floors and video entry for extra security**
- **Floor to ceiling windows in living area with views over The North Downs**
- **Allocated parking & communal gardens**



Nearest Schools

Primary Schools: Hillcroft Primary 0.5 miles, St John's CofE Aided Primary 0.7 miles, Marden Lodge Primary 1.0 miles

Secondary Schools: Clifton Hill School 0.6 miles, Caterham



Transport Information

Train Stations: Caterham 0.1 miles, Woldingham 1.4 miles, Whyteleafe South 1.5 miles



Address

The Gardens, Church Hill, Caterham, Surrey, CR3



Directions

For directions to this property please contact us.



cubitt&west
Helping you move forwards

Call Caterham Branch 01883 331000 ■ cubittandwest.co.uk



■ Legal advice should be taken to verify fixtures/fittings, planning, alterations and/or lease details ■ Appliances & services are untested, dimensions are approximate and floor plans are not to scale
■ Through a Homewise Home For Life Plan people aged 60+ can secure this property for up to 59% less, by purchasing a Lifetime Lease.



24407364/20230309/LP/BG