



Price
£485,000

Freehold

2x  2x  1x 

**Broadleaf Place,
Whyteleafe Road,
Caterham, Surrey, CR3**

cubitt&west
Helping you move forwards



Main features

- One of the stunning homes at Broadleaf Place in Caterham
- Contemporary kitchen with stone worktops and integrated Siemens appliances
- Save on energy bills with economically designed underfloor heating to ground floor

Accommodation

GROUND FLOOR

Entrance Hall

Living/Dining Room: 16'5 x 14'9
(5.01m x 4.50m)

Kitchen: 12'4 x 6'1 (3.76m x 1.86m)

FIRST FLOOR

Landing

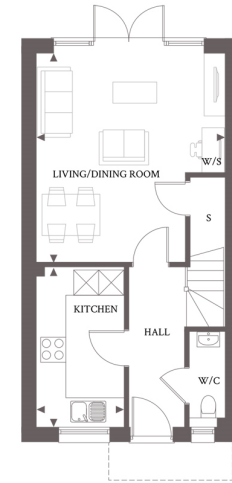
Bedroom 1 plus en-suite: 12'8 x 9'6
(3.86m x 2.90m)

Bedroom 2 : 14'9 x 9'3 (4.50m x 2.82m)

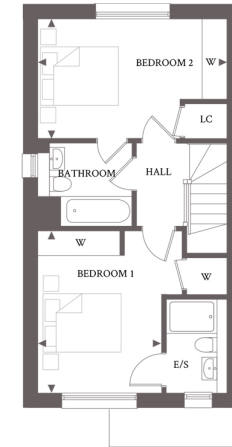
OUTSIDE

Allocated Parking

Rear Garden



PLOT 5 BROADLEAF PLACE
GROUND FLOOR



PLOT 5 BROADLEAF PLACE
FIRST FLOOR

Call Caterham - 01883 331000 ■ cubittandwest.co.uk

- If buying to let, the energy rating will need to be improved to at least 'E' rating before you can let the property
- Legal advice should be taken to verify fixtures/fittings, planning, alterations and/or lease details
- Appliances & services are untested, dimensions are approximate and floor plans are not to scale



24407371/20221220/HM/LP