



Price
£600,000

Freehold

3x  2x  1x 

**Broadleaf, Whyteleafe
Road, Caterham, Surrey,
CR3**

cubitt&west
Helping you move forwards



Main features

- One of the stunning homes at **Broadleaf Place in Caterham**
- Contemporary kitchen with stone worktops and integrated Siemens appliances
- Save on energy bills with economically designed underfloor heating to ground floor

Accommodation

GROUND FLOOR

Entrance Hall

Living/Dining Room: 17'3 x 17'3
(5.26m x 5.26m)

Kitchen/Breakfast Room: 13'1 x 9'5
(3.99m x 2.87m)

FIRST FLOOR

Landing

Bedroom 1 plus en-suite: 17'1 x 9'6
(5.21m x 2.90m)

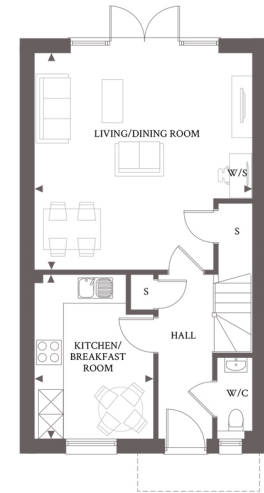
Bedroom 2: 12'4 x 9'6 (3.76m x 2.90m)

Bedroom 3: 11'7 x 7'5 (3.53m x 2.26m)

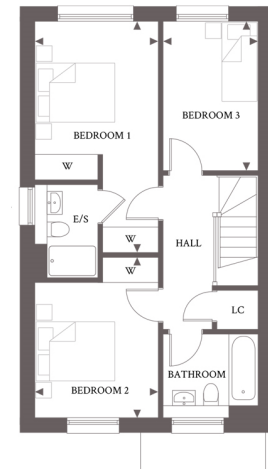
Outside

Allocated Parking

Rear Garden



PLOT 41 BROADLEAF PLACE
GROUND FLOOR



PLOT 41 BROADLEAF PLACE
FIRST FLOOR

Call Caterham - 01883 331000 ■ cubittandwest.co.uk

- If buying to let, the energy rating will need to be improved to at least 'E' rating before you can let the property
- Legal advice should be taken to verify fixtures/fittings, planning, alterations and/or lease details
- Appliances & services are untested, dimensions are approximate and floor plans are not to scale



24407377/20230309/LP/LP