



Price
£500,000

Freehold

4x  2x  1x 

**Bunce Drive, Caterham,
Surrey, CR3**

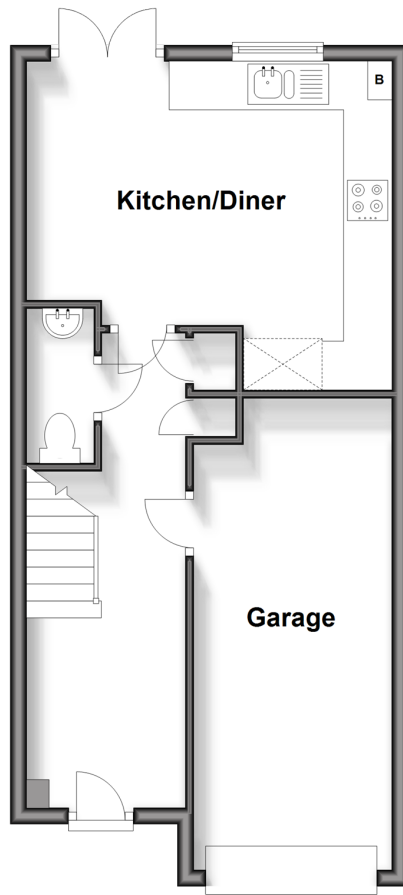
OVER 60?

Secure this property
for up to **59% less!**

cubitt&west
Helping you move forwards

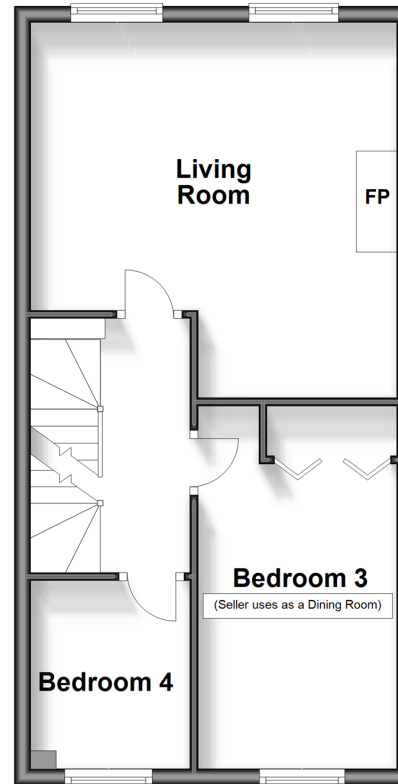
Ground Floor

Approx. 43.7 sq. metres (470.1 sq. feet)



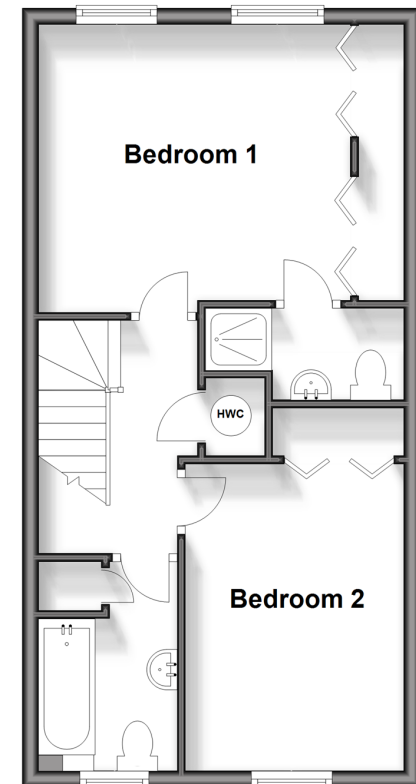
First Floor

Approx. 41.8 sq. metres (449.8 sq. feet)



Second Floor

Approx. 41.8 sq. metres (449.8 sq. feet)



Accommodation

GROUND FLOOR

Entrance Hallway

Kitchen: 14'10 x 10'8 (4.52m x 3.25m)

Separate Toilet: 6'3 x 2'10 (1.91m x 0.86m)

FIRST FLOOR

Living Room: 15'3 x 14'10 (4.65m x 4.52m)

Bedroom 3: 12'7 x 11'1 (3.84m x 3.38m)

Bedroom 4: 12'7 x 8'9 (3.84m x 2.67m)

SECOND FLOOR

Bedroom 1: 12'6 x 8'1 (3.81m x 2.47m)

Ensuite Bathroom: 8'1 x 3'11 (2.47m x 1.19m)

Bedroom 2: 7'0 x 6'1 (2.14m x 1.86m)

Family Bathroom: 8'9 x 8'9 (2.67m x 2.67m)

OUTSIDE

Integral Garage

Driveway

Allocated Parking



Main features

- Well presented terraced town house with integral garage
- Spacious accommodation that is ideal for entertaining
- Low maintenance rear garden
- Third bedroom currently used as a dining room
- Great location for walks to Coulsdon Common and Happy Valley



Nearest Schools

Primary Schools: Hillcroft Primary 0.6 miles, Audley Primary 1.3 miles, St Francis Catholic Primary 1.3 miles

Secondary Schools: Clifton Hill School 0.5 miles, de Stafford School 1.1 miles, Sunnydown School 1.3 miles



Transport Information

Train Stations: Caterham 1.4 miles, Whyteleafe South 2.4 miles, Whyteleafe 2.5 miles



Address

Bunce Drive, Caterham, Surrey, CR3



Directions

For directions to this property please contact us.



cubitt&west
Helping you move forwards

Call Caterham Branch 01883 331000 ■ cubittandwest.co.uk



■ Legal advice should be taken to verify fixtures/fittings, planning, alterations and/or lease details ■ Appliances & services are untested, dimensions are approximate and floor plans are not to scale
■ Through a Homewise Home For Life Plan people aged 60+ can secure this property for up to 59% less, by purchasing a Lifetime Lease.



24407405/20240419/BG/BG