



OVER 60?

Secure this property
for up to **59% less!**

Price

£550,000

Freehold

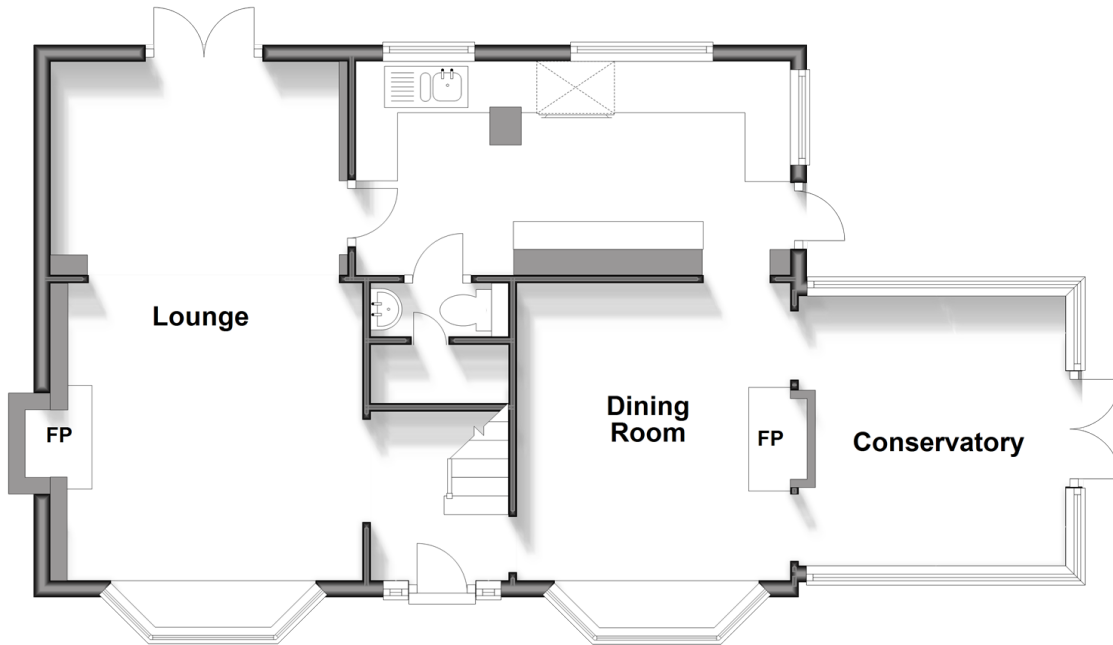
4x  2x  2x 

**Tillingdown Hill,
Caterham, Surrey, CR3**

cubitt&west
Helping you move forwards

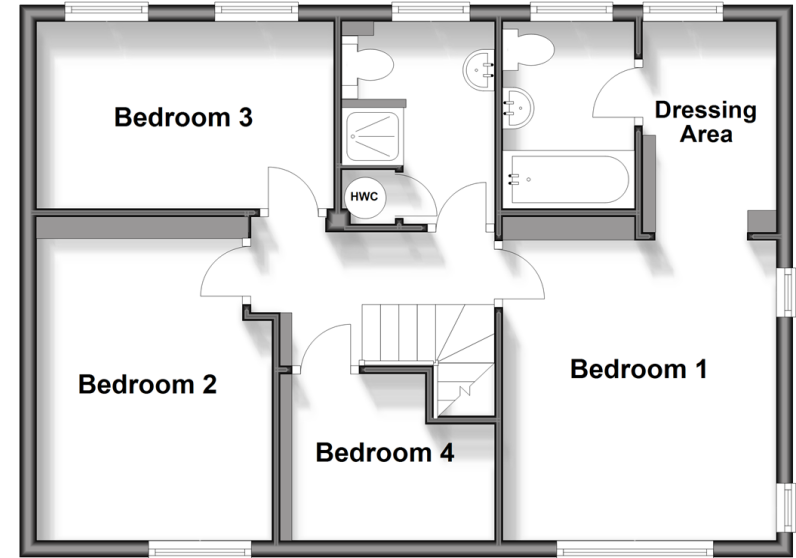
Ground Floor

Approx. 66.5 sq. metres (715.8 sq. feet)



First Floor

Approx. 56.0 sq. metres (603.2 sq. feet)



Accommodation

GROUND FLOOR

Entrance Hallway

Lounge: 20'5 x 11'6 (6.23m x 3.51m)

Dining Room: 14'0 x 10'9 (4.27m x 3.28m)

Conservatory: 10'8 x 10'5 (3.25m x 3.18m)

Kitchen: 17'0 x 7'8 (5.19m x 2.34m)

FIRST FLOOR

Landing

Bedroom 1: 11'11 x 10'9 (3.63m x 3.28m)

Bedroom 2: 11'11 x 9'2 (3.63m x 2.80m)

Bedroom 3: 11'7 x 7'5 (3.53m x 2.26m)

Bedroom 4: 7'11 x 6'7 (2.41m x 2.01m)

Bathroom: 7'11 x 6'7 (2.41m x 2.01m)

Dressing Area: 8'6 x 4'7 (2.59m x 1.40m)

Ensuite Bathroom: 7'9 x 5'2 (2.36m x 1.58m)

OUTSIDE

Single Garage

Off Road Parking

Front and Rear garden



Main features

- Distinctive detached house set on a large plot
- War Bunker in the rear garden currently used as a Wine Cellar
- Single garage and off road parking
- Walking distance to local shops and transport links
- Spacious conservatory leading out to the large garden



Nearest Schools

Primary Schools: Marden Lodge Primary 0.2 miles, Whyteleafe Primary 1.6 miles, St Francis Catholic Primary 1.6 miles, Caterham School 1.8 miles

Secondary Schools: de Stafford School 1.2 miles,



Transport Information

Train Stations: Caterham 0.9 miles, Whyteleafe South 1.0 miles, Whyteleafe 1.2 miles, Upper Warlingham 1.5 miles



Address

Tillingdown Hill, Caterham, Surrey, CR3



Directions

For directions to this property please contact us.



cubitt&west
Helping you move forwards

Call Caterham Branch 01883 331000 ■ cubittandwest.co.uk



- Legal advice should be taken to verify fixtures/fittings, planning, alterations and/or lease details
- Appliances & services are untested, dimensions are approximate and floor plans are not to scale
- Through a Homewise Home For Life Plan people aged 60+ can secure this property for up to 59% less, by purchasing a Lifetime Lease.



24407428/20231218/LP/BG