



**Price**  
**£360,000**

**Freehold**

2x  1x  2x 

**Godstone Road,  
Whyteleafe, Surrey, CR3**

**OVER 60?**

Secure this property  
for up to **59% less!**



Video Tour available

**cubitt&west**  
Helping you move forwards



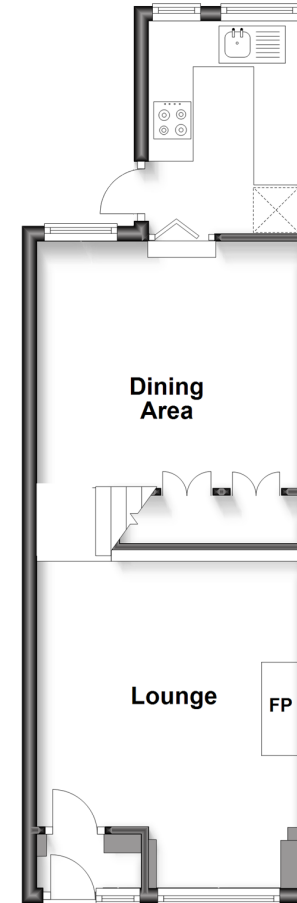


## Main features

- Two double bedroom terraced house
- Off road parking for one car to the rear with access to the garden
- Renovated by the current owner for you to move straight into
- Family bathroom to the first floor
- Walking distance to three train stations & local shops

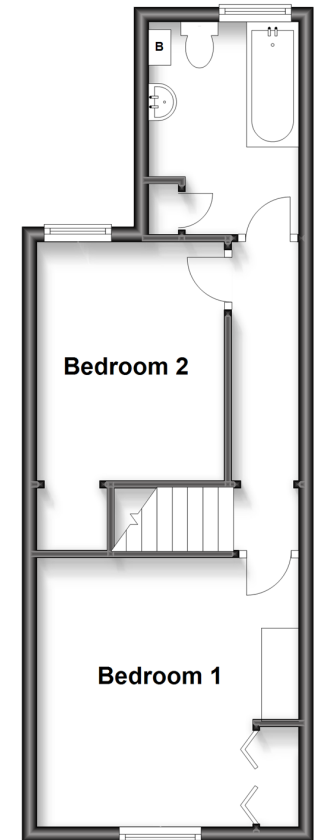
### Split Level Ground Floor

Approx. 36.8 sq. metres (396.4 sq. feet)



### First Floor

Approx. 33.6 sq. metres (361.5 sq. feet)



## Accommodation

### GROUND FLOOR

Porch

Lounge: 12'2 x 11'3 (3.71m x 3.43m)

Dining Room: 11'9 x 7'5 (3.58m x 2.26m)

Kitchen: 9'3 x 7'5 (2.82m x 2.26m)

### FIRST FLOOR

Bedroom One: 11'7 x 11'1 (3.53m x 3.38m)

Bedroom Two

Bathroom: 9'5 x 7'3 (2.87m x 2.21m)

### OUTSIDE

Rear Garden

Off Street Parking To The Rear

**Call Caterham - 01883 331000 ■ [cubittandwest.co.uk](http://cubittandwest.co.uk)**

- Legal advice should be taken to verify fixtures/fittings, planning, alterations and/or lease details
- Appliances & services are untested, dimensions are approximate and floor plans are not to scale
- Through a Homewise Home For Life Plan people aged 60+ can secure this property for up to 59% less, by purchasing a Lifetime Lease.



24407443/20230630/LP/LP