



Price
£550,000

Freehold

5x  2x  2x 

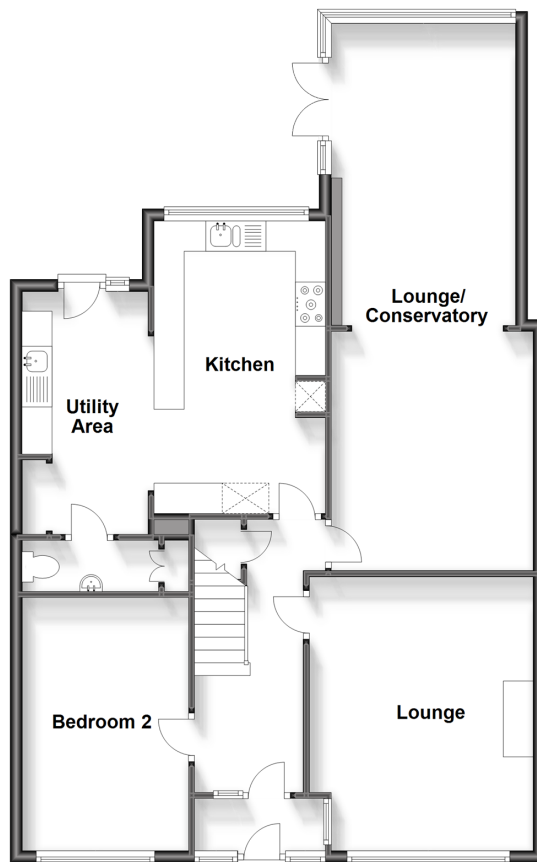
**New Barn Lane,
Whyteleafe, Surrey, CR3**

OVER 60?

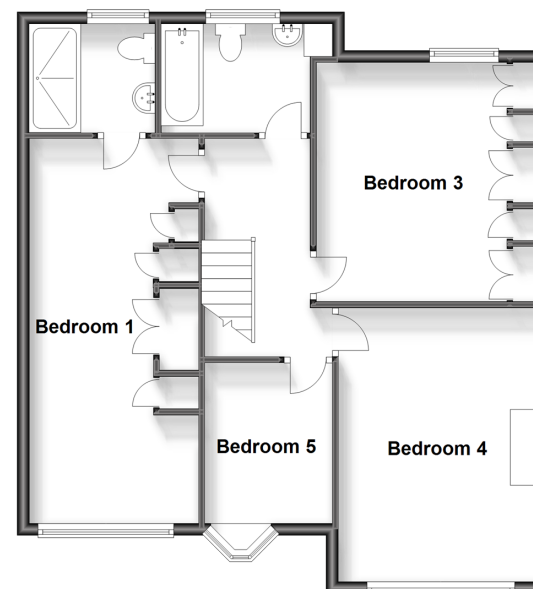
Secure this property
for up to **59% less!**

cubitt&west
Helping you move forwards

Ground Floor
Approx. 95.2 sq. metres (1024.3 sq. feet)



First Floor
Approx. 71.1 sq. metres (765.2 sq. feet)



Accommodation

GROUND FLOOR

ENTRANCE HALL

KITCHEN : 16'1 x 15'1 (4.91m x 4.60m)

LOUNGE CONSERVATORY: 29'0 x 10'1 (8.85m x 3.08m)

LOUNGE: 15'0 x 12'0 (4.58m x 3.66m)

BEDROOM 2 DOWNSTAIRS : 14'0 x 9'0 (4.27m x 2.75m)

EN SUITE: 6'0 x 5'0 (1.83m x 1.53m)

BATHROOM: 8'0 x 5'1 (2.44m x 1.55m)

BEDROOM 3: 13'0 x 10'0 (3.97m x 3.05m)

BEDROOM 4: 14'1 x 10'1 (4.30m x 3.08m)

BEDROOM 5: 8'0 x 6'1 (2.44m x 1.86m)

OUTSIDE

DRIVEWAY

FRONT AND REAR GARDEN

FIRST FLOOR

LANDING

BEDROOM 1: 20'0 x 9'0 (6.10m x 2.75m)



Main features

- 5 bedroom semi-detached home with conservatory on a quiet road
- Downstairs Bedroom and toilet
- Lounge, dining room, kitchen and ensuite bathroom
- Garden with scenic views
- Close to transport links



Nearest Schools

Primary Schools: Kenley Primary 0.0 miles, Whyteleafe Primary 0.6 miles, Hamsey Green Junior School 0.8 miles

Secondary Schools: Riddlesdown High School 0.7 miles, Warlingham School 0.7 miles, Kingsdown Secondary



Transport Information

Train Stations: Whyteleafe 0.4 miles, Upper Warlingham 0.5 miles, Kenley 0.9 miles



Address

New Barn Lane, Whyteleafe, Surrey, CR3



Directions

For directions to this property please contact us.



cubitt&west
Helping you move forwards

Call Caterham Branch 01883 331000 ■ cubittandwest.co.uk



- Legal advice should be taken to verify fixtures/fittings, planning, alterations and/or lease details
- Through a Homewise Home For Life Plan people aged 60+ can secure this property for up to 59% less, by purchasing a Lifetime Lease.
- Appliances & services are untested, dimensions are approximate and floor plans are not to scale



24407561/20230816/BG/BG