



Price
£450,000

Freehold

3x  1x  2x 

**Godstone Road,
Whyteleafe, Surrey, CR3**

OVER 60?

Secure this property
for up to **59% less!**

cubitt&west
Helping you move forwards



Main features

- Three bedroom end of terrace house with driveway
- Open plan kitchen/diner leading out to the garden
- Walking distance to three train stations & local shops
- Ready to move into as renovated by the previous owners
- Downstairs toilet

Accommodation

GROUND FLOOR

Entrance Hall

Lounge: 13'9 x 11'5 (4.19m x 3.48m)

Kitchen/Diner: 23'2 x 16'11 (7.07m x 5.16m)

Cloakroom

FIRST FLOOR

Landing

Bedroom One: 11'5 x 10'1 (3.48m x 3.08m)

Bedroom Two: 11'1 x 10'1 (3.38m x 3.08m)

Bedroom Three: 7'5 x 5'8 (2.26m x 1.73m)

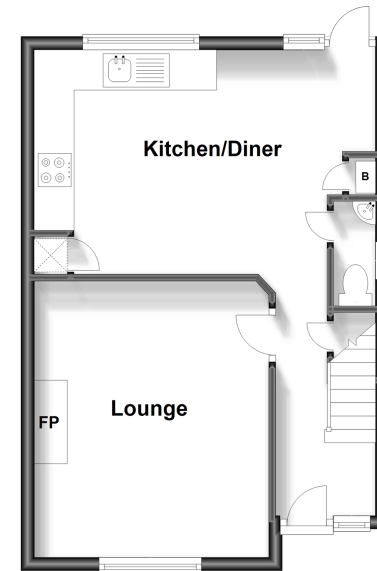
Bathroom: 7'5 x 5'8 (2.26m x 1.73m)

OUTSIDE

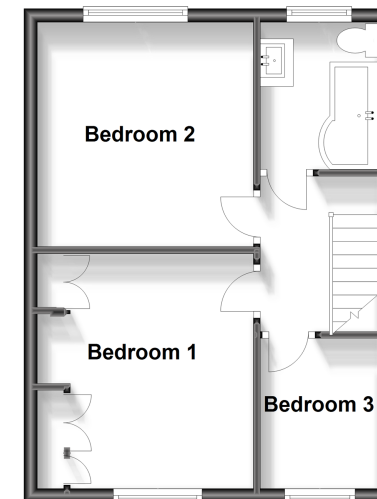
Driveway

Rear Garden

Ground Floor
Approx. 38.0 sq. metres (409.0 sq. feet)



First Floor
Approx. 36.0 sq. metres (387.7 sq. feet)



Call Caterham - 01883 331000 ■ cubittandwest.co.uk

- Legal advice should be taken to verify fixtures/fittings, planning, alterations and/or lease details
- Appliances & services are untested, dimensions are approximate and floor plans are not to scale
- Through a Homewise Home For Life Plan people aged 60+ can secure this property for up to 59% less, by purchasing a Lifetime Lease.



24407564/20230801/LP/LP