



Price
£600,000

Freehold

3x  1x  2x 

**Hillcrest Road,
Whyteleafe, Surrey, CR3**

OVER 60?

Secure this property
for up to **59% less!**



Virtual Reality Tour available

cubitt&west
Helping you move forwards

Accommodation

GROUND FLOOR

Entrance Hall

Cloakroom

Lounge: 14'0 x 11'0 (4.27m x 3.36m)

Office: 10'0 x 6'0 (3.05m x 1.83m)

Kitchen/Diner: 23'11 x 17'0 (7.29m x 5.19m)

Utility Room: 9'11 x 6'0 (3.02m x 1.83m)

FIRST FLOOR

Landing

Bedroom 1: 11'10 x 8'0 (3.61m x 2.44m)

Bedroom 2: 11'0 x 9'0 (3.36m x 2.75m)

Bedroom 3: 8'0 x 6'0 (2.44m x 1.83m)

Bathroom: 7'0 x 6'0 (2.14m x 1.83m)

OUTSIDE

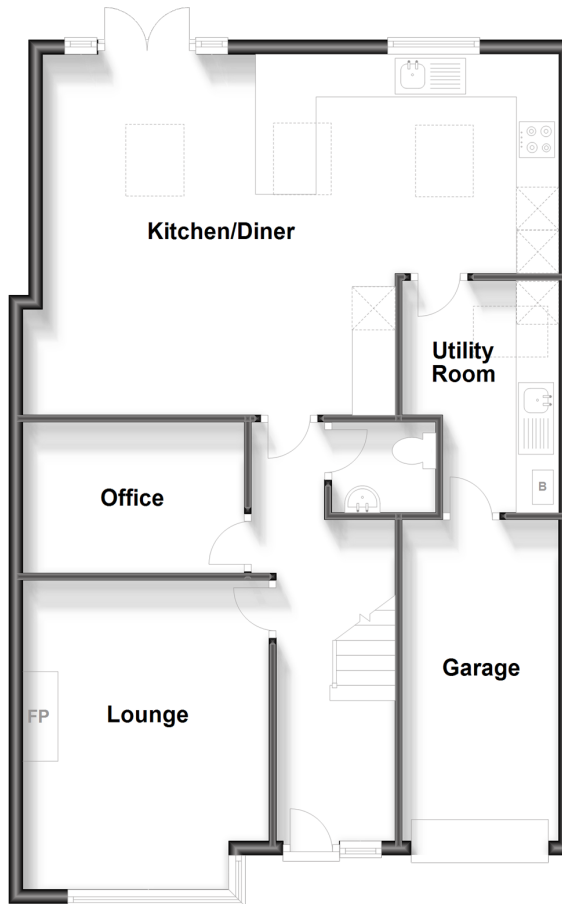
Driveway

Front Garden

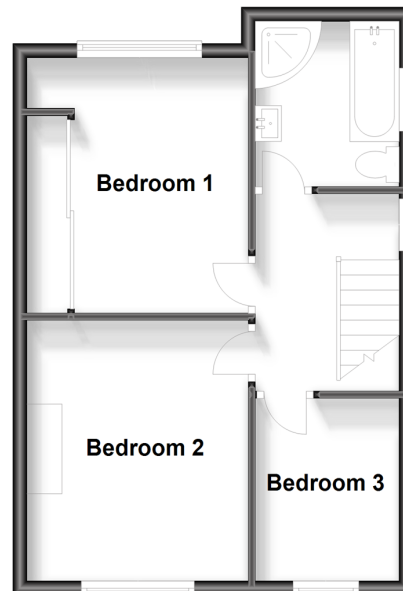
Garage

Rear Garden

Ground Floor
Approx. 84.4 sq. metres (908.3 sq. feet)



First Floor
Approx. 39.6 sq. metres (426.3 sq. feet)





Main features

- Beautiful 3 bedroom semi-detached home on a quiet road
- Office, utility room and downstairs cloakroom
- Large extension incorporating open plan kitchen/diner with oak flooring
- Garage and driveway plus landscaped garden with green house and outhouse building
- Great location with schools, shops and close to transport links to London



Nearest Schools

Primary: Kenley Primary 0.2 miles, Whyteleafe Primary 0.3 miles, Hamsey Green Junior School 0.8 miles

Secondary: Warlingham School 0.7 miles, Riddlesdown High School 0.8 miles, Sunnydown School 1.1 miles



Transport Information

Train Stations: Whyteleafe 0.2 miles, Upper Warlingham 0.3 miles, Whyteleafe South 0.6 miles



Address

Hillcrest Road, Whyteleafe, Surrey, CR3



Directions

For directions to this property please contact us.



cubitt&west
Helping you move forwards

Call Caterham Branch 01883 331000 ■ cubittandwest.co.uk



- Legal advice should be taken to verify fixtures/fittings, planning, alterations and/or lease details
- Appliances & services are untested, dimensions are approximate and floor plans are not to scale
- Through a Homewise Home For Life Plan people aged 60+ can secure this property for up to 59% less, by purchasing a Lifetime Lease.



24407599/20230812/JC/BG