



Price
£425,000

Freehold

3x  2x  1x 

**Downsway, Whyteleafe,
Surrey, CR3**

OVER 60?

Secure this property
for up to **59% less!**

cubitt&west
Helping you move forwards



Main features

- End of terrace house with large patio area out front
- Recently decorated throughout
- Potential scope to extend (subject to planning permissions)
- Great location for schools and within walking distance to local shops
- Rear and front garden surrounded by woodland

Accommodation

GROUND FLOOR

Entrance Hall

Living Room: 16'0 x 10'0 (4.88m x 3.05m)

Kitchen: 12'0 x 10'0 (3.66m x 3.05m)

Bathroom: 9'0 x 4'10 (2.75m x 1.47m)

FIRST FLOOR

Landing

Bedroom 1: 11'0 x 9'11 (3.36m x 3.02m)

En-Suite Shower Room: 9'10 x 4'0 (3.00m x 1.22m)

Bedroom 2: 12'0 x 8'0 (3.66m x 2.44m)

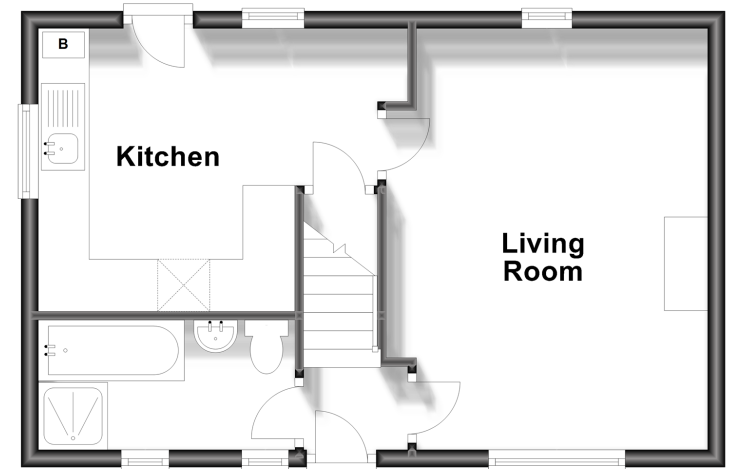
Bedroom 3: 8'11 x 7'0 (2.72m x 2.14m)

OUTSIDE

Front & Rear Gardens

Ground Floor

Approx. 37.3 sq. metres (402.0 sq. feet)



First Floor

Approx. 37.3 sq. metres (402.0 sq. feet)



Call Caterham - 01883 331000 ■ cubittandwest.co.uk

- Legal advice should be taken to verify fixtures/fittings, planning, alterations and/or lease details
- Appliances & services are untested, dimensions are approximate and floor plans are not to scale
- Through a Homewise Home For Life Plan people aged 60+ can secure this property for up to 59% less, by purchasing a Lifetime Lease.



24407619/20230923/JE/BG