



Price

£210,000

Leasehold

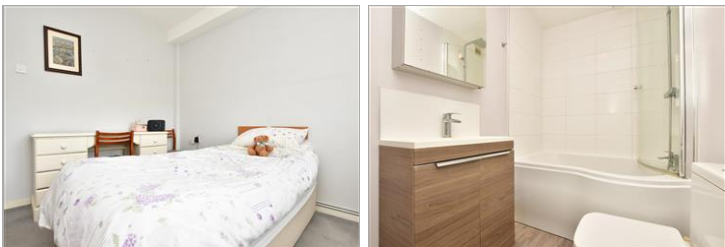
1x  1x  1x 

**Edgeworth Close,
Whyteleafe, Surrey, CR3**

OVER 60?

Secure this property
for up to **59% less!**

cubitt&west
Helping you move forwards



Main features

- Ground floor flat with patio doors to communal gardens
- Well presented throughout with a breakfast bar to the kitchen
- Low monthly service charge and ground rent
- Walking distance to three stations and local shops

Accommodation

GROUND FLOOR

Entrance Hallway

Kitchen/Lounge: 21'5 x 12'5 (6.53m x 3.79m)

Bedroom: 10'8 x 10'5 (3.25m x 3.18m)

Bathroom: 6'9 x 4'10 (2.06m x 1.47m)

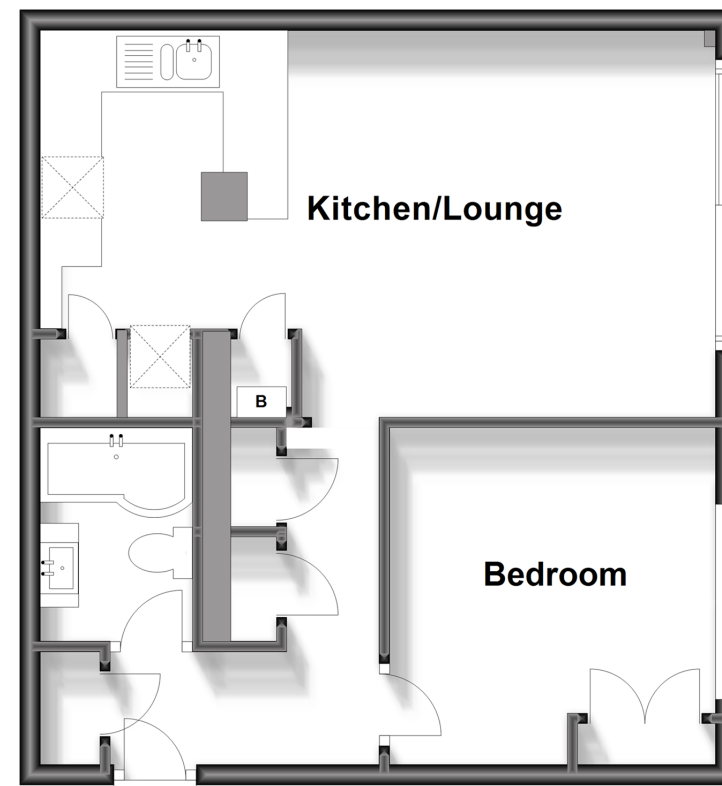
OUTSIDE

Communal garden

First come first serve parking

Ground Floor

Approx. 46.7 sq. metres (502.8 sq. feet)



Call Caterham - 01883 331000 ■ cubittandwest.co.uk

- Legal advice should be taken to verify fixtures/fittings, planning, alterations and/or lease details
- Appliances & services are untested, dimensions are approximate and floor plans are not to scale
- Through a Homewise Home For Life Plan people aged 60+ can secure this property for up to 59% less, by purchasing a Lifetime Lease.

