



Price
£900,000

Freehold

5x  2x  2x 

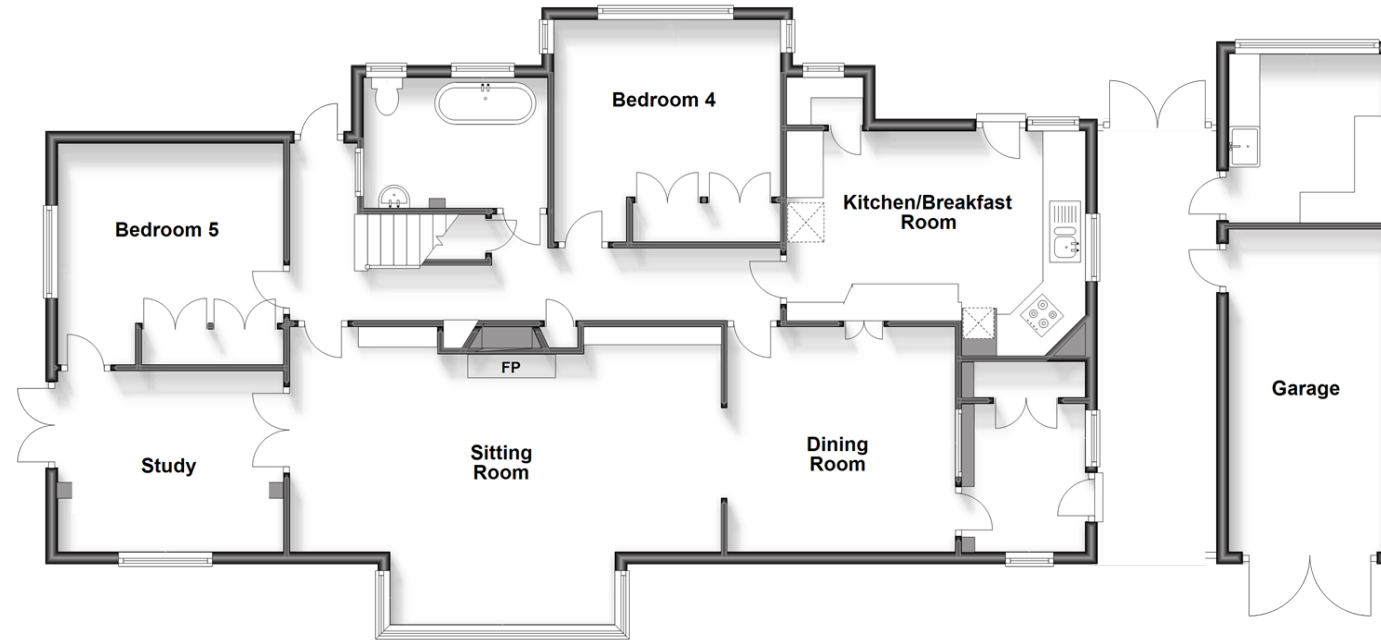
**Essendene Road,
Caterham, Surrey, CR3**

OVER 60?

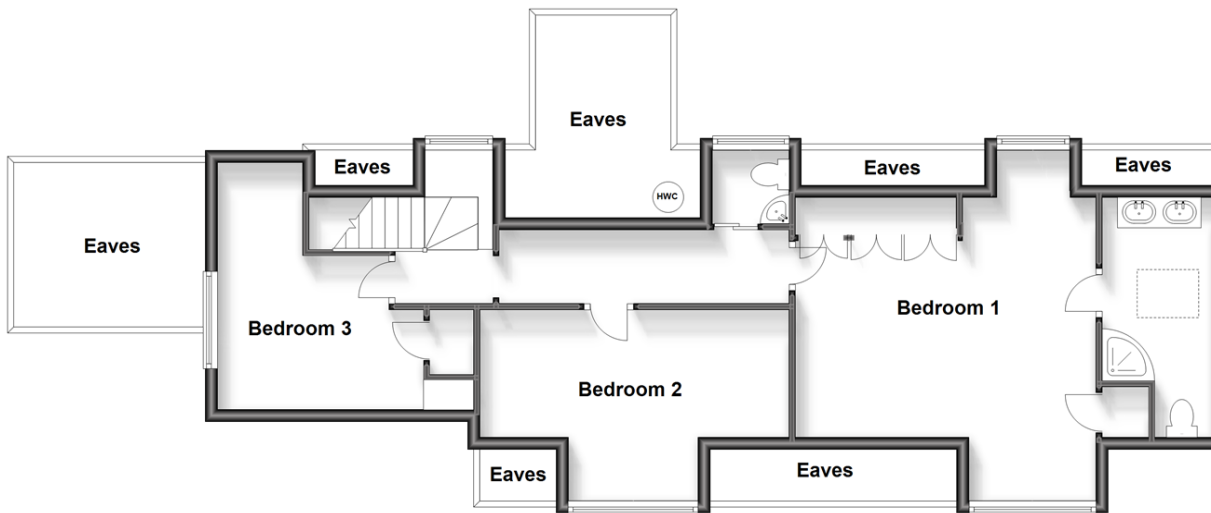
Secure this property
for up to **59% less!**

cubitt&west
Helping you move forwards

Ground Floor
Approx. 150.7 sq. metres (1622.1 sq. feet)



First Floor
Approx. 67.2 sq. metres (723.4 sq. feet)



Accommodation

GROUND FLOOR

Porch: 8'6 x 5'8 (2.59m x 1.73m)
Dining Room: 12'6 x 12'1 (3.81m x 3.69m)
Sitting Room: 22'9 x 16'5 (6.94m x 5.01m)
Study: 12'0 x 9'7 (3.66m x 2.92m)
Kitchen: 15'7 x 12'1 (4.75m x 3.69m)
Bedroom 2: 13'4 x 11'8 (4.07m x 3.56m)
Bedroom 3: 12'3 x 11'9 (3.74m x 3.58m)
Bathroom: 9'6 x 6'5 (2.90m x 1.96m)

FIRST FLOOR

Landing
Bedroom 1: 17'8 x 16'5 (5.39m x 5.01m)
Ensuite: 12'7 x 5'9 (3.84m x 1.75m)
Bedroom 4: 13'2 x 12'1 (4.02m x 3.69m)
Bedroom 5: 16'4 x 9'6 (4.98m x 2.90m)
Cloakroom

OUTSIDE

Garage: 17'7 x 8'4 (5.36m x 2.54m)
Workshop: 9'1 x 8'3 (2.77m x 2.52m)
Driveway
Front Garden
Rear Garden



Main features

- Large, serene front and rear gardens
- Driveway for multiple cars as well as a garage and workshop
- Ample eaves storage as well as built in wardrobes to all five bedrooms
- Downstairs study with double aspect views
- High ceilings throughout



Nearest Schools

Primary Schools: Hillcroft Primary 0.5 miles, Audley Primary 0.7 miles, St Francis Catholic Primary 0.7 miles

Secondary Schools: de Stafford School 0.5 miles, Clifton Hill School 0.6 miles, Sunnydown School 0.7 miles



Transport Information

Train Stations: Caterham 0.9 miles, Woldingham 1.5 miles, Whyteleafe 1.7 miles, Whyteleafe South 1.7 miles



Address

Essendene Road, Caterham, Surrey, CR3



Directions

For directions to this property please contact us.



cubitt&west
Helping you move forwards

Call Caterham Branch 01883 331000 ■ cubittandwest.co.uk



■ Legal advice should be taken to verify fixtures/fittings, planning, alterations and/or lease details ■ Appliances & services are untested, dimensions are approximate and floor plans are not to scale
■ Through a Homewise Home For Life Plan people aged 60+ can secure this property for up to 59% less, by purchasing a Lifetime Lease.



24407654/20231028/JE/LP