



OVER 60?

Secure this property
for up to **59% less!**

Price

£475,000

Freehold

3x  1x  2x 

**Stafford Road,
Caterham, Surrey, CR3**

cubitt&west
Helping you move forwards



Main features

- Chain Free
- Modern open plan kitchen/diner leading out to the garden
- Refurbished family bathroom
- Walking distance to three stations as well as Manor Park being at the end of the road
- Perfect location due to no houses opposite

Accommodation

GROUND FLOOR

Entrance Hall
Living Room: 13'4 x 11'4 (4.07m x 3.46m)
Kitchen/Diner: 17'3 x 12'6 (5.26m x 3.81m)

FIRST FLOOR

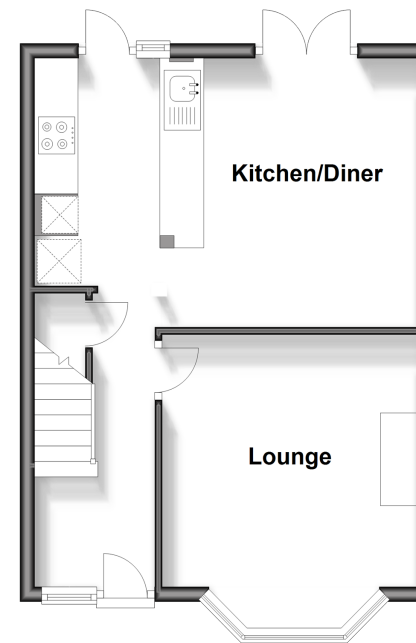
Landing
Bedroom 1: 13'6 x 8'4 up to fitted cupboard (4.12m x 2.54m)
Bedroom 2: 12'6 x 10'5 (3.81m x 3.18m)
Bedroom 3: 7'0 x 6'5 (2.14m x 1.96m)
Family Bathroom: 7'5 x 6'2 (2.26m x 1.88m)

OUTSIDE

Front & Rear Gardens

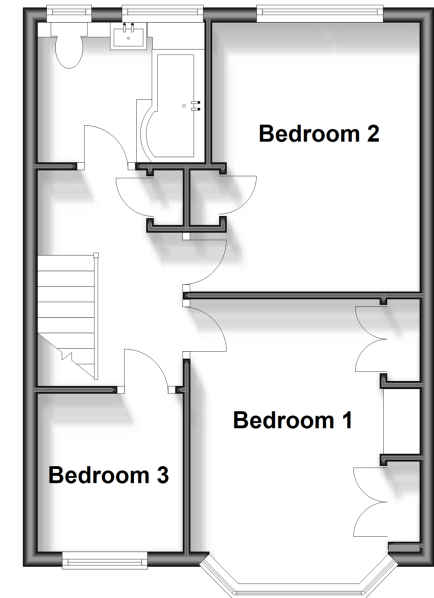
Ground Floor

Approx. 37.8 sq. metres (406.7 sq. feet)



First Floor

Approx. 37.8 sq. metres (406.8 sq. feet)



Call Caterham - 01883 331000 ■ cubittandwest.co.uk

- Legal advice should be taken to verify fixtures/fittings, planning, alterations and/or lease details
- Appliances & services are untested, dimensions are approximate and floor plans are not to scale
- Through a Homewise Home For Life Plan people aged 60+ can secure this property for up to 59% less, by purchasing a Lifetime Lease.

