



Price

£315,000

Leasehold

2x  1x  1x 

**Clearway Court,
Croydon Road,
Caterham, Surrey, CR3**

cubitt&west
Helping you move forwards



Main features

- Open plan living areas
- Fully fitted German Cashmere kitchen with integrated appliances and stone work tops
- Spacious and inviting bedrooms with fitted carpet
- Beautifully appointed bathrooms with heated towel rails

Accommodation

GROUND FLOOR

Entrance Hallway

Kitchen/Living Room: 21'4 x 12'10 (6.51m x 3.91m)

Bedroom 1: 11'2 x 10'10 (3.41m x 3.30m)

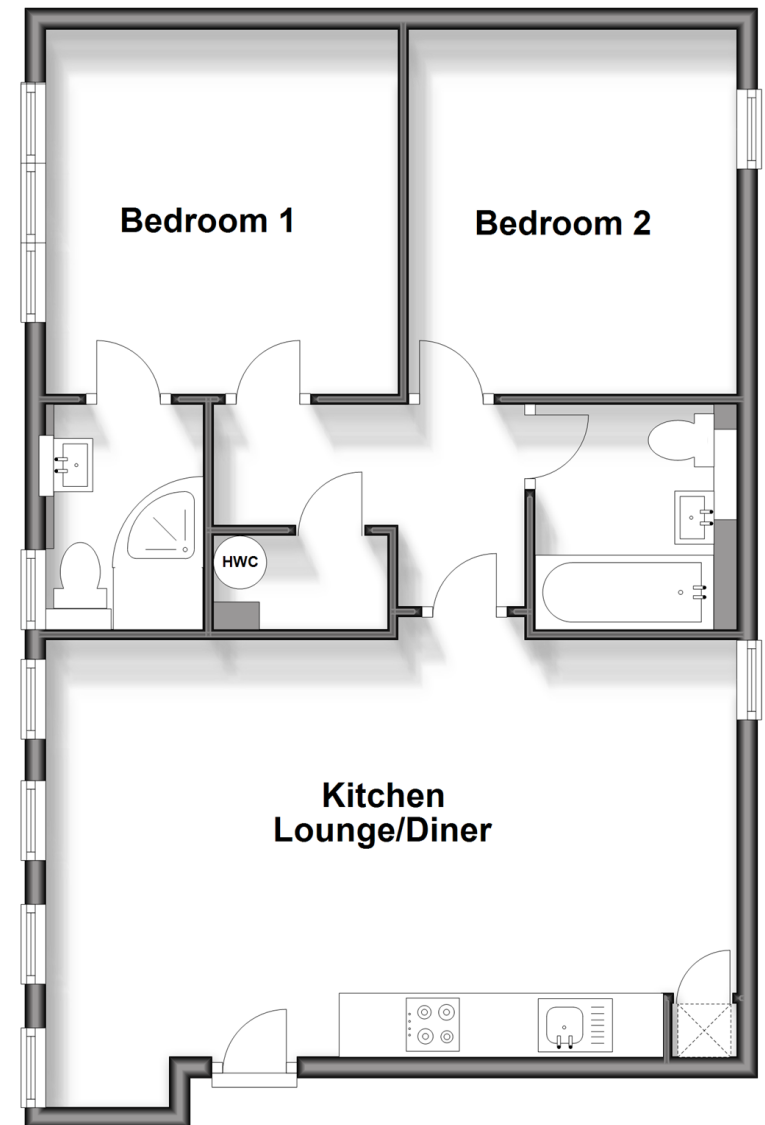
En Suite: 6'6 x 4'7 (1.98m x 1.40m)

Bedroom 2: 11'2 x 10'1 (3.41m x 3.08m)

Bathroom: 6'11 x 5'6 (2.11m x 1.68m)

Ground Floor

Approx. 64.9 sq. metres (699.0 sq. feet)



Call Caterham - 01883 331000 ■ cubittandwest.co.uk

- Legal advice should be taken to verify fixtures/fittings, planning, alterations and/or lease details
- Appliances & services are untested, dimensions are approximate and floor plans are not to scale