



Price

£290,000

Leasehold

2x  1x  1x 

**Clearway Court,
Croydon Road,
Caterham, Surrey, CR3**

cubitt&west
Helping you move forwards



Main features

- Open plan living areas
- Fully fitted German Cashmere kitchen with integrated appliances and stone work tops
- Spacious and inviting bedrooms with fitted carpet
- Beautifully appointed bathrooms with heated towel rails



Accommodation

FIRST FLOOR

Entrance Hallway

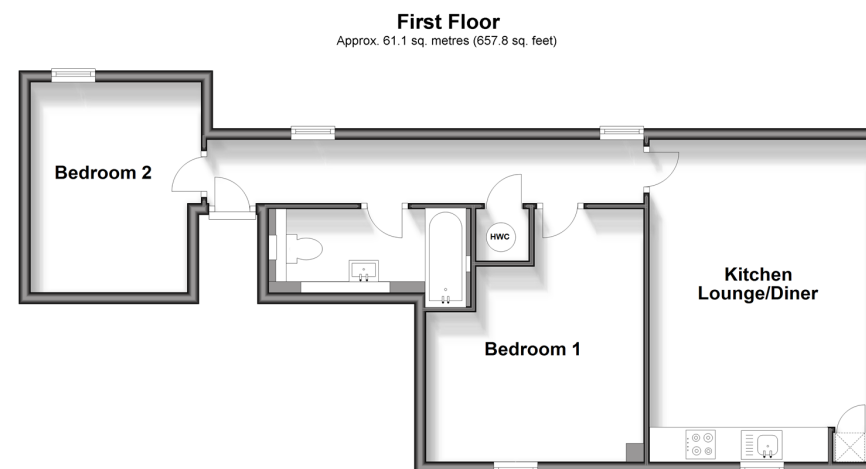
Kitchen/Living Room: 18'3 x 12'3 (5.57m x 3.74m)

Bedroom 1: 14'4 x 12'3 (4.37m x 3.74m)

En Suite

Bedroom 2: 11'11 x 9'7 (3.63m x 2.92m)

Bathroom : 10'8 x 4'2 (3.25m x 1.27m)



Call Caterham - 01883 331000 ■ cubittandwest.co.uk

- Legal advice should be taken to verify fixtures/fittings, planning, alterations and/or lease details
- Appliances & services are untested, dimensions are approximate and floor plans are not to scale