



Price

£325,000

Leasehold

2x  1x  1x 

**Clearway Court,
Croydon Road,
Caterham, Surrey, CR3**

cubitt&west
Helping you move forwards



Main features

- Open plan living areas
- Fully fitted German Cashmere kitchen with integrated appliances and stone work tops
- Spacious and inviting bedrooms with fitted carpet
- Beautifully appointed bathrooms with heated towel rails

Accommodation

FIRST FLOOR

Entrance Hallway

Kitchen/Living Room: 21'3 x 11'10 (6.48m x 3.61m)

Bedroom 1: 13'7 x 11'10 (4.14m x 3.61m)

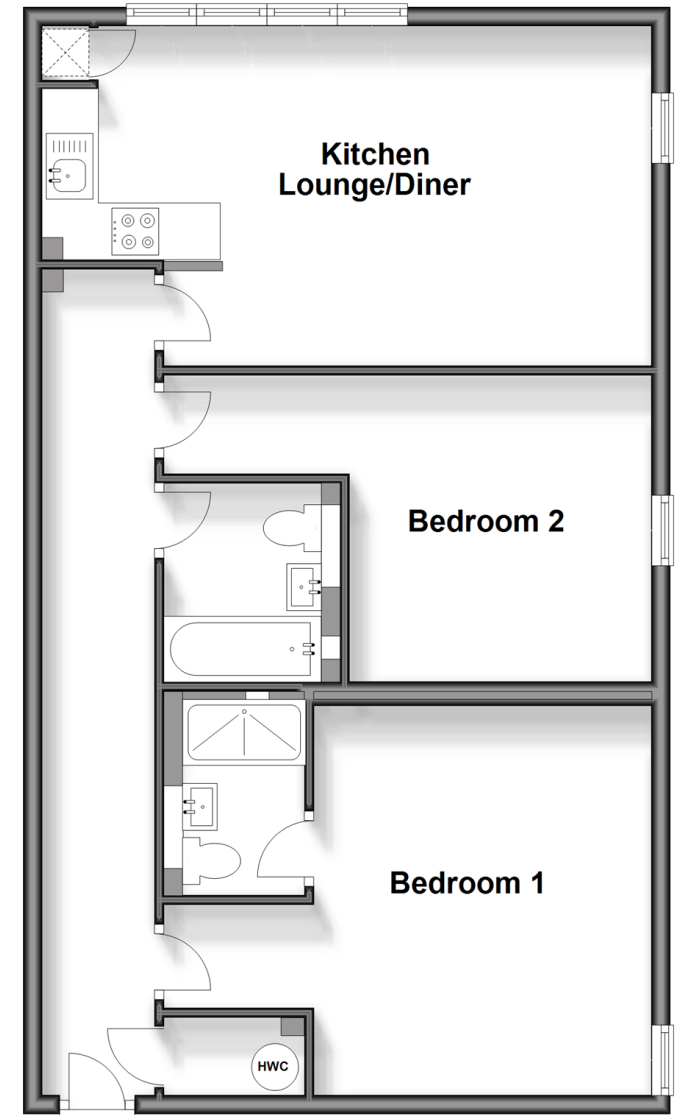
En Suite: 6'9 x 4'2 (2.06m x 1.27m)

Bedroom 2: 10'10 x 10'6 (3.30m x 3.20m)

Bathroom: 6'11 x 5'8 (2.11m x 1.73m)

First Floor

Approx. 74.2 sq. metres (798.5 sq. feet)



Call Caterham - 01883 331000 ■ cubittandwest.co.uk

- Legal advice should be taken to verify fixtures/fittings, planning, alterations and/or lease details
- Appliances & services are untested, dimensions are approximate and floor plans are not to scale