



Price
£325,000

Leasehold

2x  1x  1x 

**Clearway Court,
Croydon Road,
Caterham, Surrey, CR3**

cubitt&west
Helping you move forwards



Main features

- Open plan living areas
- Fully fitted German Cashmere kitchen with integrated appliances and stone work tops
- Spacious and inviting bedrooms with fitted carpet
- Beautifully appointed bathrooms with heated towel rails

Accommodation

SECOND FLOOR

Entrance Hallway

Kitchen/Living Room

Bedroom 1: 12'4 x 11'9 (3.76m x 3.58m)

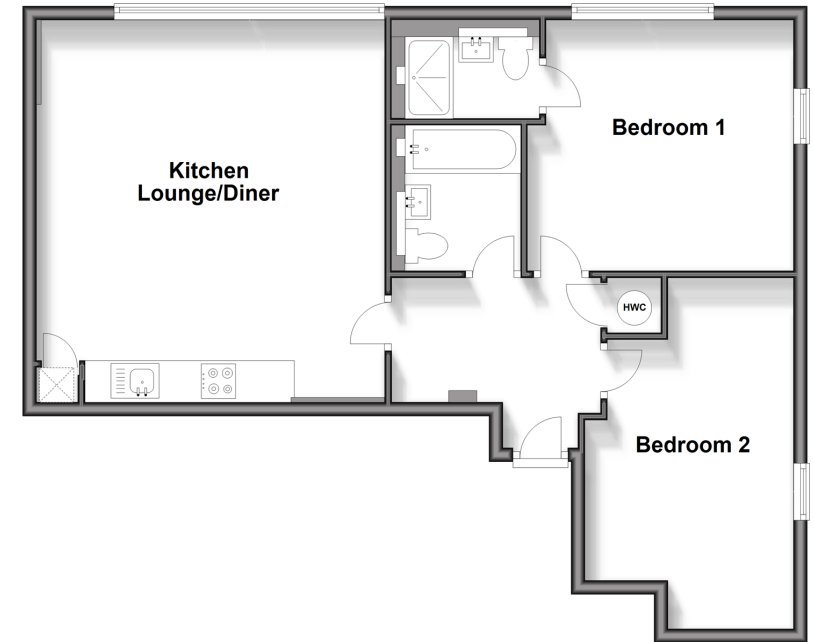
En Suite: 6'10 x 4'6 (2.08m x 1.37m)

Bedroom 2: 16'7 x 9'6 (5.06m x 2.90m)

Bathroom: 6'11 x 5'5 (2.11m x 1.65m)

Second Floor

Approx. 70.5 sq. metres (758.9 sq. feet)



Call Caterham - 01883 331000 ■ cubittandwest.co.uk

- Legal advice should be taken to verify fixtures/fittings, planning, alterations and/or lease details
- Appliances & services are untested, dimensions are approximate and floor plans are not to scale

