



Price

£425,000

Freehold

2x  1x  1x 

Croydon Road, Caterham, Surrey, CR3

cubitt & west
Helping you move forwards



Main features

- Semi detached house with driveway
- Large decked area leading out from the open plan living/dining room
- Potential to extend to the rear
- Well presented throughout
- Close by to local amenities and transport links

Accommodation

GROUND FLOOR

Entrance Hallway

Living Room: 13'6 x 11'0 (4.12m x 3.36m)

Dining Room: 11'0 x 10'6 (3.36m x 3.20m)

Kitchen: 13'1 x 5'9 (3.99m x 1.75m)

FIRST FLOOR

Hallway

Bedroom 2: 11'2 x 11'0 (3.41m x 3.36m)

Bedroom 1: 11'7 x 11'2 (3.53m x 3.41m)

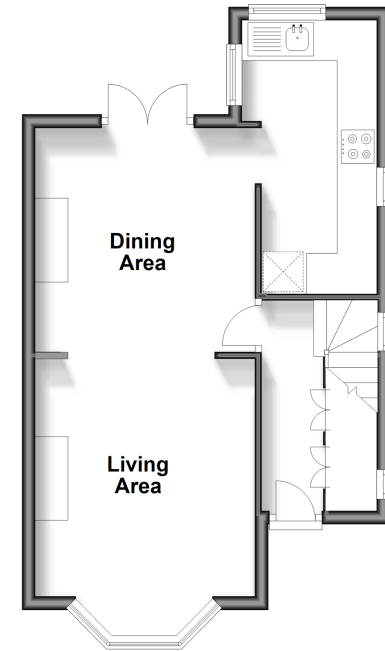
Bathroom: 8'7 x 6'8 (2.62m x 2.03m)

OUTSIDE

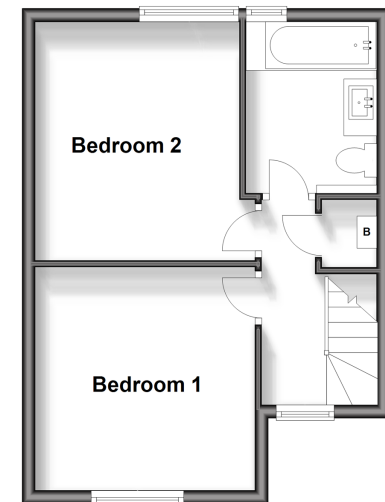
Driveway

Rear Garden

Ground Floor
Approx. 37.6 sq. metres (404.9 sq. feet)



First Floor
Approx. 34.0 sq. metres (366.3 sq. feet)



Call Caterham - 01883 331000 ■ cubittandwest.co.uk

- Legal advice should be taken to verify fixtures/fittings, planning, alterations and/or lease details
- Appliances & services are untested, dimensions are approximate and floor plans are not to scale



24407770/20240325/LP/LP