



**Price**

**£650,000**

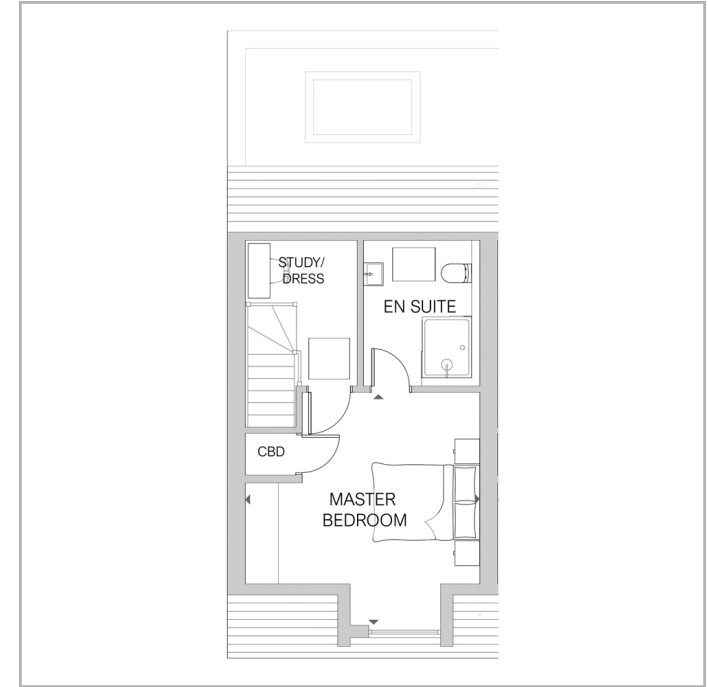
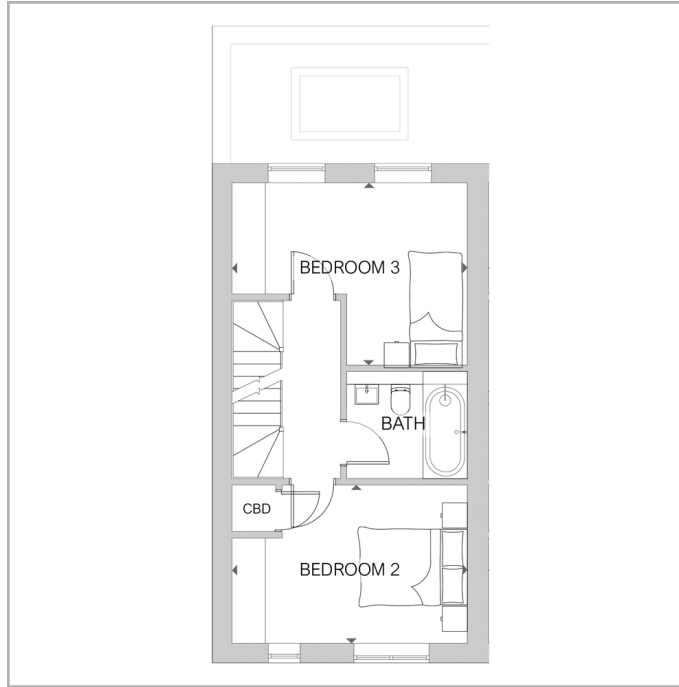
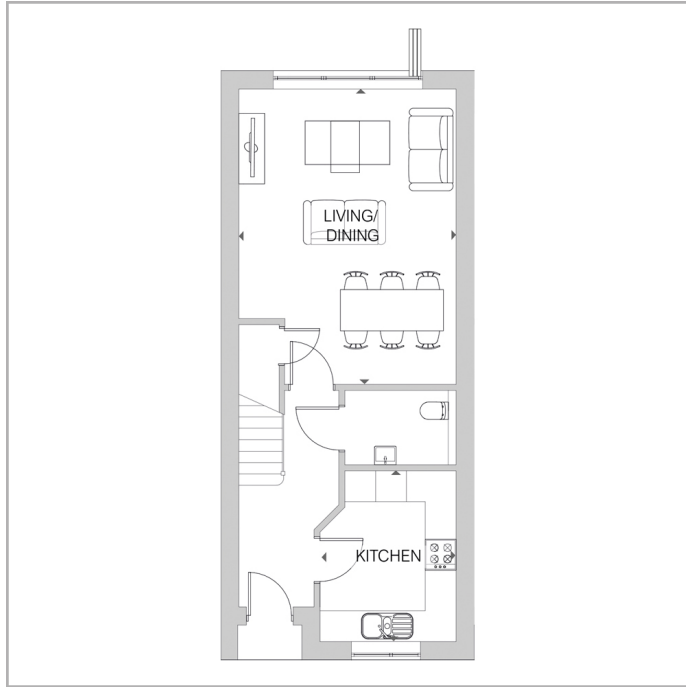
**Freehold**

3x  2x  1x 

**Harestone Gardens,  
Stanstead Road,  
Caterham, Surrey, CR3**

**cubitt&west**  
Helping you move forwards





## Accommodation

### GROUND FLOOR

Hallway  
 Kitchen: 10'11 x 8'8 (3.33m x 2.64m)  
 Living/Dining: 18'10 x 13'11 (5.74m x 4.24m)  
 Downstairs Cloakroom

### FIRST FLOOR

Landing  
 Bedroom 2: 13'11 x 9'4 (4.24m x 2.85m)  
 Bedroom 3: 13'11 x 10'9 (4.24m x 3.28m)  
 Bathroom

### SECOND FLOOR

Bedroom 1: 14'3 x 14'1 (4.35m x 4.30m)  
 Dressing Room  
 En-suite

### OUTSIDE

Rear Garden  
 Allocated Parking



## Main features

- Open plan lounge/diner with bi-folding doors to the large rear garden with patio
- Sleek fitted kitchen with integrated appliances and granite/quartz worktops
- Underfloor heating or radiators throughout
- White sanitaryware with chrome fittings to bathroom and en-suite
- Air source heat pump for hot water and heating
- Allocated parking for each home



### Nearest Schools

Primary Schools: Hillcroft Primary 0.5 miles, St John's CofE Aided Primary 0.9 miles, Audley Primary 1.2 miles  
Private primary school, very close to White Hill Close

Secondary Schools: Caterham School 0.4 miles, Clifton Hill



### Transport Information

Train Stations: Caterham 0.6 miles, Woldingham 1.8 miles, Whyteleafe South 1.8 miles



### Address

Harestone Gardens, Stanstead Road, Caterham, Surrey, CR3



### Directions

For directions to this property please contact us.





**cubitt&west**  
Helping you move forwards

Call Caterham Branch 01883 331000 ■ [cubittandwest.co.uk](https://cubittandwest.co.uk)



■ If buying to let, the energy rating will need to be improved to at least 'E' rating before you can let the property  
■ Appliances & services are untested, dimensions are approximate and floor plans are not to scale

■ Legal advice should be taken to verify fixtures/fittings, planning, alterations and/or lease details

24407801/20240328/LP/LP