



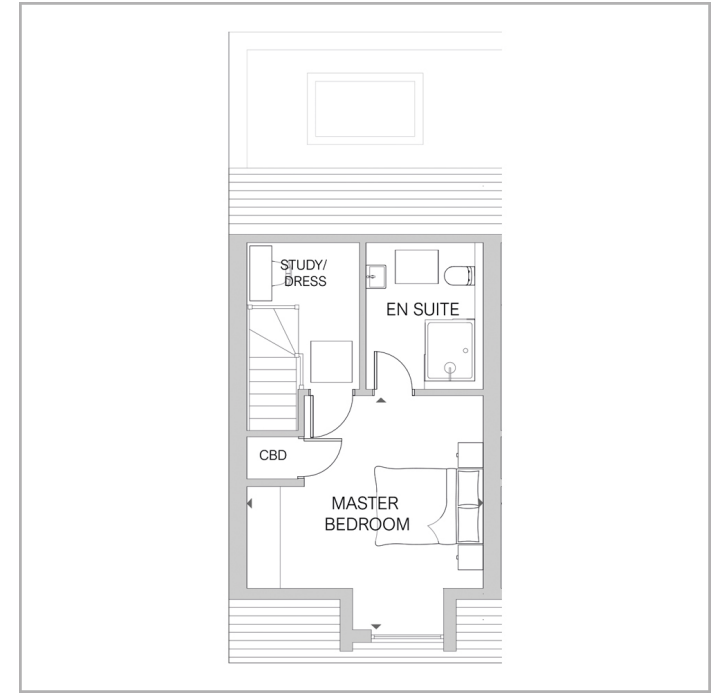
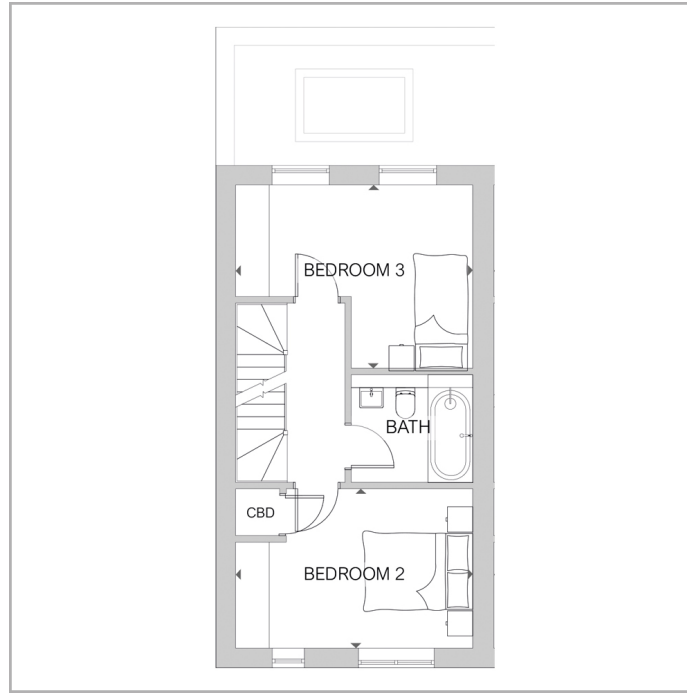
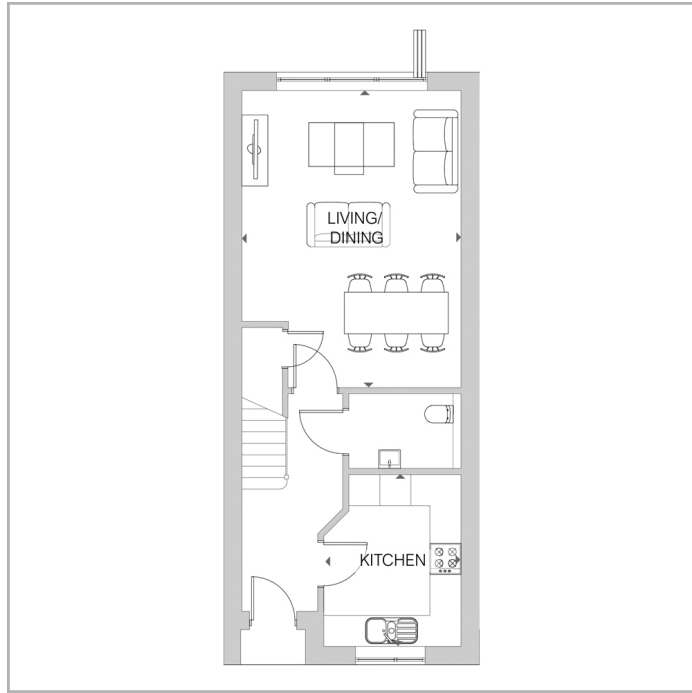
Price
£625,000

Freehold

3x  2x  1x 

**Harestone Gardens,
Stanstead Road,
Caterham, Surrey, CR3**

cubitt&west
Helping you move forwards



Accommodation

GROUND FLOOR

Hallway
 Kitchen: 10'11 x 8'8 (3.33m x 2.64m)
 Living/Dining: 18'10 x 13'11 (5.74m x 4.24m)
 Downstairs Cloakroom

FIRST FLOOR

Landing
 Bedroom 2: 13'11 x 9'4 (4.24m x 2.85m)
 Bedroom 3: 13'11 x 10'9 (4.24m x 3.28m)
 Bathroom

SECOND FLOOR

Bedroom 1: 14'3 x 14'1 (4.35m x 4.30m)
 Dressing Room
 En-suite

OUTSIDE

Rear Garden
 Allocated Parking



Main features

- Open plan lounge/diner with bi-folding doors to the large rear garden with patio
- Sleek fitted kitchen with integrated appliances and granite/quartz worktops
- Underfloor heating or radiators throughout
- White sanitaryware with chrome fittings to bathroom and en-suite
- Air source heat pump for hot water and heating
- Allocated parking for each home



Nearest Schools

Primary Schools: Hillcroft Primary 0.5 miles, St John's CofE Aided Primary 0.9 miles, Audley Primary 1.2 miles
Private primary school, very close to White Hill Close

Secondary Schools: Caterham School 0.4 miles, Clifton Hill



Transport Information

Train Stations: Caterham 0.6 miles, Woldingham 1.8 miles, Whyteleafe South 1.8 miles



Address

Harestone Gardens, Stanstead Road, Caterham, Surrey, CR3



Directions

For directions to this property please contact us.





cubitt&west
Helping you move forwards

Call Caterham Branch 01883 331000 ■ cubittandwest.co.uk



- If buying to let, the energy rating will need to be improved to at least 'E' rating before you can let the property
- Appliances & services are untested, dimensions are approximate and floor plans are not to scale

- Legal advice should be taken to verify fixtures/fittings, planning, alterations and/or lease details

24407803/20240328/LP/LP