

**OVER 60?**

Secure this property  
for up to **59% less!**



**Price**

**£750,000**

**Freehold**

5x  3x  2x 

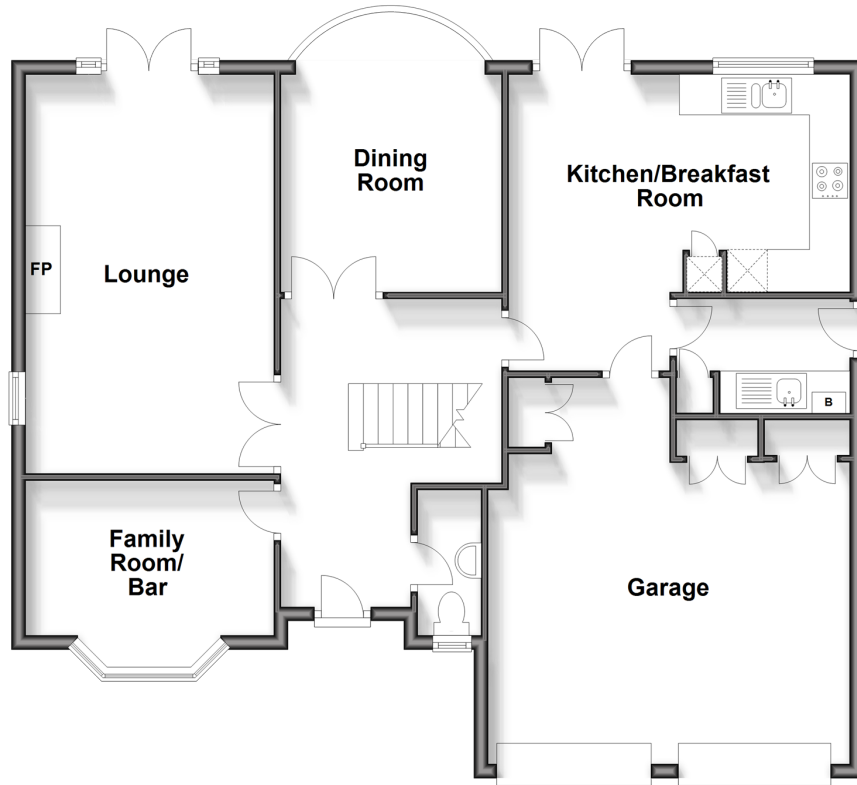
Meiros Way, Ashington, West Sussex, RH20

**cubitt & west**  
Helping you move forwards



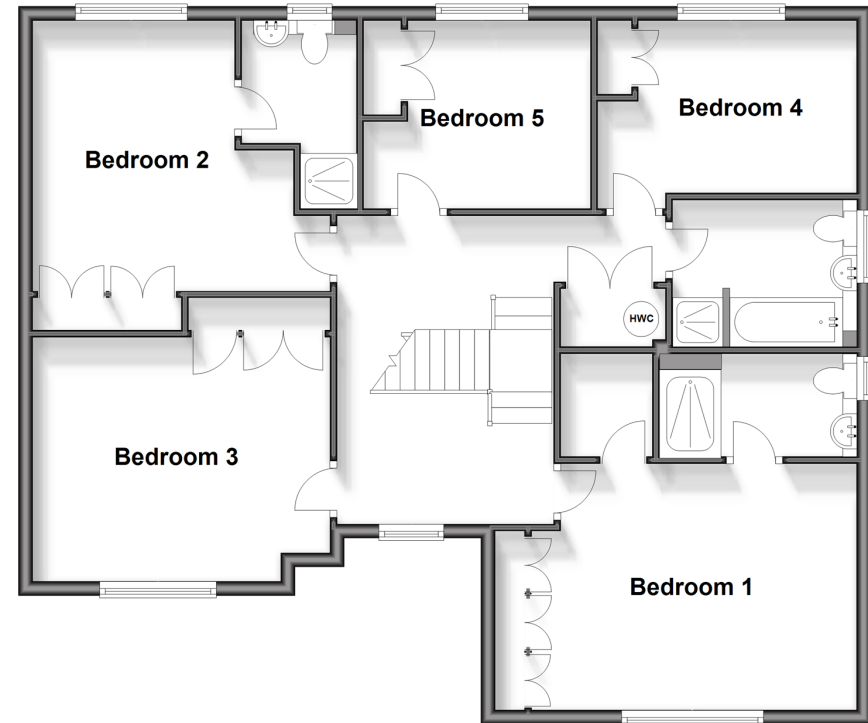
## Ground Floor

Approx. 1108.8 sq. feet



## Split Level First Floor

Approx. 1085.4 sq. feet



## Accommodation

### GROUND FLOOR

Hall  
Cloakroom  
Lounge: 18'5 x 11'6 (5.62m x 3.51m)  
Family Room/Bar: 11'6 x 9'0 (3.51m x 2.75m)  
Dining Room: 15'1 into bay x 10'4 (4.60m x 3.15m)  
Kitchen/Breakfast Room: 16'1 x 13'8 (4.91m x 4.17m)  
Utility: 8'2 x 5'2 (2.49m x 1.58m)

### FIRST FLOOR

Galleried Landing  
Family Bathroom  
Bedroom 1: 15'0 up to fitted wardrobes x 11'6 (4.58m x 3.51m)  
Dressing Area  
En suite Shower Room  
Bedroom 2: 12'7 up to fitted wardrobes x 12'2 (3.84m x 3.71m)

### En suite Shower Room

Bedroom 3: 14'0 up to fitted wardrobes x 11'3 (4.27m x 3.43m)  
Bedroom 4: 12'6 x 8'0 (3.81m x 2.44m)  
Bedroom 5: 10'8 x 8'9 (3.25m x 2.67m)

### OUTSIDE

Front Garden  
Driveway  
Double Garage  
Rear Garden



## Main features

- Substantial detached house built by David Wilson homes in 1999
- Five good sized bedrooms, 2 with en suite shower
- Superb layout with plenty of room for growing families and entertaining
- Sought after location within walking distance of first school and countryside
- No chain



### Nearest Schools

Primary Schools: Ashington C of E School 0.6 miles,

Secondary Schools: Steyning Grammar School, Lower School, Rock Road site 3.0 miles, Upper School, Shooting Field site 5.6 miles



### Transport Information

Train Stations: Pulborough 10.0 miles, Billingshurst 7.3 miles, Amberley 9.5 miles



### Address

Meiros Way, Ashington, West Sussex, RH20



### Directions

For directions to this property please contact us.





**cubitt&west**  
Helping you move forwards

Call Ashington Branch 01903 891444 ■ [cubittandwest.co.uk](https://cubittandwest.co.uk)



- Legal advice should be taken to verify fixtures/fittings, planning, alterations and/or lease details
- Appliances & services are untested, dimensions are approximate and floor plans are not to scale
- Through a Homewise Home For Life Plan people aged 60+ can secure this property for up to 59% less, by purchasing a Lifetime Lease.



28167986/20240425/CNW/HM1