



Guide Price
£375,000

Freehold

3x  1x  1x 

**The Crestway, Brighton,
East Sussex, BN1**

OVER 60?

Secure this property
for up to **59% less!**

cubitt&west
Helping you move forwards



Main features

- Family home in popular Hollingdean
- Close to excellent schools and nurseries
- Lovely views to the front
- Double garage, currently used as a gym, could be a home office
- Sunny rear garden

Accommodation

GROUND FLOOR

Entrance Hall

Lounge: 18'1 x 10'4 (5.52m x 3.15m)

Kitchen/Diner: 18'0 x 12'1 (5.49m x 3.69m)

FIRST FLOOR

Landing

Bedroom 2: 12'0 x 8'10 (3.66m x 2.69m)

Shower Room

Bedroom 1: 12'1 x 10'0 (3.69m x 3.05m)

Bedroom 3: 8'9 x 7'7 (2.67m x 2.31m)

Separate Toilet

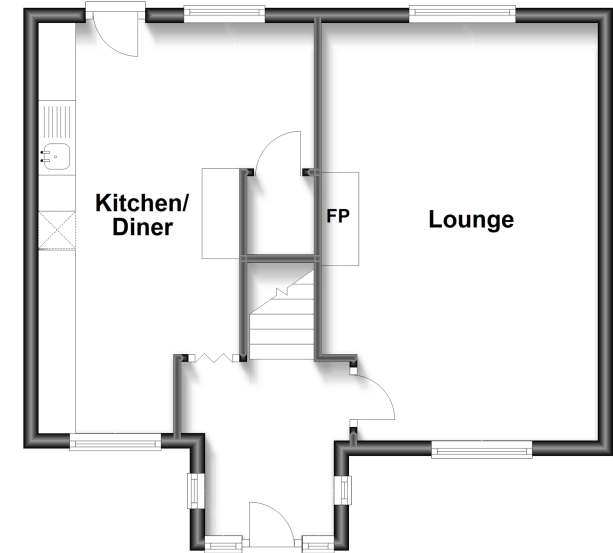
OUTSIDE

Front & Rear Gardens

Garage

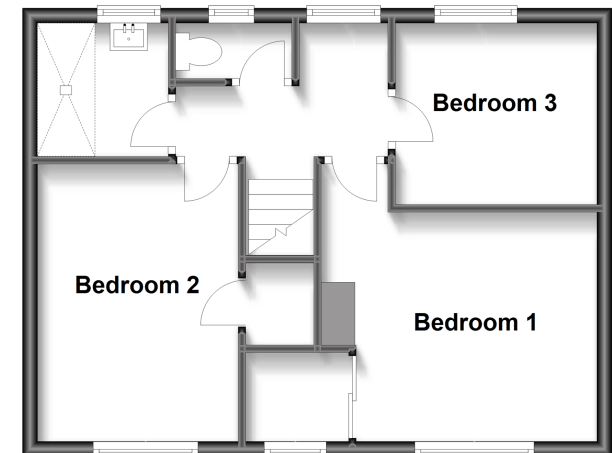
Ground Floor

Approx. 43.9 sq. metres (472.5 sq. feet)



First Floor

Approx. 41.9 sq. metres (451.3 sq. feet)



Call Fiveways - 01273 564444 ■ cubittandwest.co.uk

- Legal advice should be taken to verify fixtures/fittings, planning, alterations and/or lease details
- Appliances & services are untested, dimensions are approximate and floor plans are not to scale
- Through a Homewise Home For Life Plan people aged 60+ can secure this property for up to 59% less, by purchasing a Lifetime Lease.



30502507/20221123/AB/EM